



SZABO SCANDIC

Part of Europa Biosite

Produktinformation



Forschungsprodukte & Biochemikalien



Zellkultur & Verbrauchsmaterial



Diagnostik & molekulare Diagnostik



Laborgeräte & Service

Weitere Information auf den folgenden Seiten!
See the following pages for more information!



Lieferung & Zahlungsart

siehe unsere [Liefer- und Versandbedingungen](#)

Zuschläge

- Mindermengenzuschlag
- Trockeneiszuschlag
- Gefahrgutzuschlag
- Expressversand

SZABO-SCANDIC HandelsgmbH

Quellenstraße 110, A-1100 Wien

T. +43(0)1 489 3961-0

F. +43(0)1 489 3961-7

mail@szabo-scandic.com

www.szabo-scandic.com

[linkedin.com/company/szaboscandic](https://www.linkedin.com/company/szaboscandic) 

Recombinant Human SRC/Proto-oncogene c-Src Protein (His Tag)



Catalog Number:PDEH100026

Note: Centrifuge before opening to ensure complete recovery of vial contents.

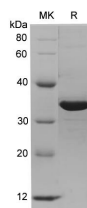
Description

Synonyms	Proto-oncogene tyrosine-protein kinase Src;Proto-oncogene c-Src;pp60c-src;p60-Src;SRC1
Species	Human
Expression Host	E.coli
Sequence	Gly2-Gly287
Accession	P12931-1
Calculated Molecular Weight	31.2 kDa
Observed molecular weight	32.4 kDa
Tag	N-His

Properties

Purity	> 90 % as determined by reducing SDS-PAGE.
Endotoxin	Please contact us for more information.
Storage	Generally, lyophilized proteins are stable for up to 12 months when stored at -20 to -80°C. Reconstituted protein solution can be stored at 4-8°C for 2-7 days. Aliquots of reconstituted samples are stable at < -20°C for 3 months.
Shipping	This product is provided as lyophilized powder which is shipped with ice packs.
Formulation	Lyophilized from sterile PBS, pH 7.4. Normally 5 % - 8 % trehalose, mannitol and 0.01 % Tween80 are added as protectants before lyophilization. Please refer to the specific buffer information in the printed manual.
Reconstitution	Please refer to the printed manual for detailed information.

Data



> 90 % as determined by reducing SDS-PAGE.

Background

Proto-oncogene tyrosine-protein kinase SRC is a hydrophobic protein belonging to the SRC family kinase including nine members that is a family of non-receptor tyrosine kinases. SRC protein may exist in different forms: C-SRC and V-SRC. C-SRC is only activated under certain circumstances where it is required such as growth factor signaling, while V-SRC is constitutively active as opposed to normal SRC (C-SRC). Thus, V-SRC is an instructive example of an oncogene protein kinase whereas C-SRC is a proto-oncogene protein kinase. Inhibition of SRC with NR2A tyrosine phosphorylation mediated by PSD-95 may contribute to the lithium-induced downregulation of NMDA receptor function and provide neuroprotection against excitotoxicity.

For Research Use Only

A Reliable Research Partner in Life Science and Medicine

Toll-free: 1-888-852-8623

Web: www.elabscience.com

Tel: 1-832-243-6086

Email: techsupport@elabscience.com

Fax: 1-832-243-6017