



# SZABO SCANDIC

Part of Europa Biosite

## Produktinformation



Forschungsprodukte & Biochemikalien



Zellkultur & Verbrauchsmaterial



Diagnostik & molekulare Diagnostik



Laborgeräte & Service

Weitere Information auf den folgenden Seiten!  
See the following pages for more information!



### Lieferung & Zahlungsart

siehe unsere [Liefer- und Versandbedingungen](#)

### Zuschläge

- Mindermengenzuschlag
- Trockeneiszuschlag
- Gefahrgutzuschlag
- Expressversand

### SZABO-SCANDIC HandelsgmbH

Quellenstraße 110, A-1100 Wien

T. +43(0)1 489 3961-0

F. +43(0)1 489 3961-7

[mail@szabo-scandic.com](mailto:mail@szabo-scandic.com)

[www.szabo-scandic.com](http://www.szabo-scandic.com)

[linkedin.com/company/szaboscandic](https://www.linkedin.com/company/szaboscandic) 

# Recombinant Human B2M/β2-MG Protein (His Tag)

Catalog Number:PDEH100028



**Note:** Centrifuge before opening to ensure complete recovery of vial contents.

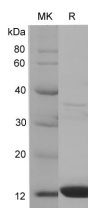
## Description

<b>Synonyms</b>	B2MG;Beta-2-Microglobulin;Beta 2 Microglobin;Beta 2 microglobulin Precursor;Beta Chain of MHC Class I Proteins;Beta Chain of MHC class I molecules;CDABP0092;Hdcma22p;IMD43
<b>Species</b>	Human
<b>Expression Host</b>	E.coli
<b>Sequence</b>	Ile21-Met119
<b>Accession</b>	P61769-1
<b>Calculated Molecular Weight</b>	11.7 kDa
<b>Observed molecular weight</b>	13.1 kDa
<b>Tag</b>	N-His

## Properties

<b>Purity</b>	> 90 % as determined by reducing SDS-PAGE.
<b>Endotoxin</b>	Please contact us for more information.
<b>Storage</b>	Generally, lyophilized proteins are stable for up to 12 months when stored at -20 to -80°C. Reconstituted protein solution can be stored at 4-8°C for 2-7 days. Aliquots of reconstituted samples are stable at < -20°C for 3 months.
<b>Shipping</b>	This product is provided as lyophilized powder which is shipped with ice packs.
<b>Formulation</b>	Lyophilized from sterile PBS, pH 7.4., 5% trehalose, 5% mannitol, 0.01% tween-80. Normally 5 % - 8 % trehalose, mannitol and 0.01% Tween80 are added as protectants before lyophilization. Please refer to the specific buffer information in the print
<b>Reconstitution</b>	Please refer to the printed manual for detailed information.

## Data



> 90 % as determined by reducing SDS-PAGE.

## Background

β-2-Microglobulin (B2M) is a secreted protein with 1 Ig-like C1-type (immunoglobulin-like) domain which belongs to the beta-2-microglobulin family. B2M component of major histocompatibility complex (MHC) class I molecules, involved in the presentation of peptide antigens to the immune system. Polymers of beta 2-microglobulin can be found in tissues from patients on long-term hemodialysis. B2M is a protein found on the surface of many cells and plentiful on the surface of white blood cells. Serum B2M concentration is increased in renal diseases, various malignant diseases and some inflammatory and autoimmune disorders. B2M may adopt the fibrillar configuration of amyloid in certain pathologic

## For Research Use Only

A Reliable Research Partner in Life Science and Medicine

Toll-free: 1-888-852-8623

Web: [www.elabscience.com](http://www.elabscience.com)

Tel: 1-832-243-6086

Email: [techsupport@elabscience.com](mailto:techsupport@elabscience.com)

Fax: 1-832-243-6017

# Recombinant Human B2M/β2-MG Protein (His Tag)

Catalog Number: PDEH100028



states. The capacity to assemble into amyloid fibrils is concentration dependent. B2M has been shown as a marker for monitoring inflammatory disease activity and it appears likely to have a destructive role in amyloidosis-related arthritis. B2M might be involved in the OA (osteoarthritis) pathogenesis. Defects in B2M are the cause of hypercatabolic hypoproteinemia. Affected individuals show marked reduction in serum concentrations of immunoglobulin and albumin, probably due to rapid degradation. B2M could be a potential therapeutic target in ovarian cancer.

---

## For Research Use Only

A Reliable Research Partner in Life Science and Medicine

Toll-free: 1-888-852-8623

Tel: 1-832-243-6086

Fax: 1-832-243-6017

Web: [www.elabscience.com](http://www.elabscience.com)

Email: [techsupport@elabscience.com](mailto:techsupport@elabscience.com)