



SZABO SCANDIC

Part of Europa Biosite

Produktinformation



Forschungsprodukte & Biochemikalien



Zellkultur & Verbrauchsmaterial



Diagnostik & molekulare Diagnostik



Laborgeräte & Service

Weitere Information auf den folgenden Seiten!
See the following pages for more information!



Lieferung & Zahlungsart

siehe unsere [Liefer- und Versandbedingungen](#)

Zuschläge

- Mindermengenzuschlag
- Trockeneiszuschlag
- Gefahrgutzuschlag
- Expressversand

SZABO-SCANDIC HandelsgmbH

Quellenstraße 110, A-1100 Wien

T. +43(0)1 489 3961-0

F. +43(0)1 489 3961-7

mail@szabo-scandic.com

www.szabo-scandic.com

[linkedin.com/company/szaboscandic](https://www.linkedin.com/company/szaboscandic) 

Recombinant Human ABL1/c-Abl protein (His tag)

Catalog Number:PDEH100140



Note: Centrifuge before opening to ensure complete recovery of vial contents.

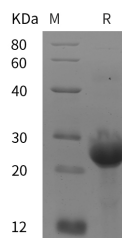
Description

Synonyms	ABL;bcr/abl;c-ABL;c-ABL1;JTK7;p150;v-abl
Species	Human
Expression Host	E.coli
Sequence	Pro 845-Ala 993
Accession	P00519
Calculated Molecular Weight	16.3 kDa
Observed molecular weight	25 kDa
Tag	N-His & C-His

Properties

Purity	> 95 % as determined by reducing SDS-PAGE.
Endotoxin	Please contact us for more information.
Storage	Generally, lyophilized proteins are stable for up to 12 months when stored at -20 to -80°C. Reconstituted protein solution can be stored at 4-8°C for 2-7 days. Aliquots of reconstituted samples are stable at < -20°C for 3 months.
Shipping	This product is provided as lyophilized powder which is shipped with ice packs.
Formulation	Lyophilized from sterile PBS, pH 7.4. Normally 5 % - 8 % trehalose, mannitol and 0.01 % Tween80 are added as protectants before lyophilization. Please refer to the specific buffer information in the printed manual.
Reconstitution	Please refer to the printed manual for detailed information.

Data



> 95 % as determined by reducing SDS-PAGE.

Background

c-Abl belongs to the class of tyrosine kinases and is the prototype of a subfamily which includes two members, c-Abl and Arg (Abl-related gene). Both proteins are localized at the cell membrane, actin cytoskeleton and cytosol, and c-Abl is present in the nucleus as well. c-Abl is a non-receptor tyrosine kinase that participates in multiple signaling pathways linking the cell surface, cytoskeleton, and the nucleus. Recent in vitro studies have also linked c-Abl to amyloid-beta-induced toxicity and tau phosphorylation. c-Abl has been implicated in many cellular processes including differentiation, division, adhesion, death, and stress response. c-Abl is a latent tyrosine kinase that becomes activated in response to numerous extra- and intra-cellular stimuli. The c-Abl protein is a ubiquitously expressed nonreceptor tyrosine kinase involved in the development and function of many mammalian organ systems, including the immune system and bone. It

For Research Use Only

A Reliable Research Partner in Life Science and Medicine

Toll-free: 1-888-852-8623

Web: www.elabscience.com

Tel: 1-832-243-6086

Email: techsupport@elabscience.com

Fax: 1-832-243-6017

Recombinant Human ABL1/c-Abl protein (His tag)

Catalog Number: PDEH100140



regulates the cellular response to TAM through functional interaction with the estrogen receptor, which suggests c-Abl as a therapeutic target and a prognostic tumor marker for breast cancer. c-Abl also plays a key role in signaling chemokine-induced T-cell migration. In addition, c-Abl contains NLSs (nuclear localization signals) and DNA-binding sequences important for nuclear functions. c-Abl has become an important therapeutic target in human chronic myeloid leukaemia.

For Research Use Only

A Reliable Research Partner in Life Science and Medicine

Toll-free: 1-888-852-8623

Tel: 1-832-243-6086

Fax: 1-832-243-6017

Web: www.elabscience.com

Email: techsupport@elabscience.com