



SZABO SCANDIC

Part of Europa Biosite

Produktinformation



Forschungsprodukte & Biochemikalien



Zellkultur & Verbrauchsmaterial



Diagnostik & molekulare Diagnostik



Laborgeräte & Service

Weitere Information auf den folgenden Seiten!
See the following pages for more information!



Lieferung & Zahlungsart

siehe unsere [Liefer- und Versandbedingungen](#)

Zuschläge

- Mindermengenzuschlag
- Trockeneiszuschlag
- Gefahrgutzuschlag
- Expressversand

SZABO-SCANDIC HandelsgmbH

Quellenstraße 110, A-1100 Wien

T. +43(0)1 489 3961-0

F. +43(0)1 489 3961-7

mail@szabo-scandic.com

www.szabo-scandic.com

[linkedin.com/company/szaboscandic](https://www.linkedin.com/company/szaboscandic) 

Recombinant Human LDHA protein (His tag)

Catalog Number:PDEH100141



Note: Centrifuge before opening to ensure complete recovery of vial contents.

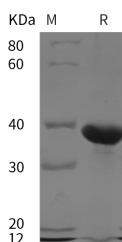
Description

Synonyms	L-Lactate Dehydrogenase A Chain;LDH-A;Cell Proliferation-Inducing Gene 19 Protein;LDH Muscle Subunit;LDH-M;Renal Carcinoma Antigen NY-REN-59;LDHA
Species	Human
Expression Host	E.coli
Sequence	Ala 2-Phe 332
Accession	P00338
Calculated Molecular Weight	36.3 kDa
Observed molecular weight	39 kDa
Tag	N-His

Properties

Purity	> 95 % as determined by reducing SDS-PAGE.
Endotoxin	Please contact us for more information.
Storage	Generally, lyophilized proteins are stable for up to 12 months when stored at -20 to -80°C. Reconstituted protein solution can be stored at 4-8°C for 2-7 days. Aliquots of reconstituted samples are stable at < -20°C for 3 months.
Shipping	This product is provided as lyophilized powder which is shipped with ice packs.
Formulation	Lyophilized from sterile PBS, pH 7.4. Normally 5 % - 8 % trehalose, mannitol and 0.01% Tween80 are added as protectants before lyophilization. Please refer to the specific buffer information in the printed manual.
Reconstitution	Please refer to the printed manual for detailed information.

Data



> 95 % as determined by reducing SDS-PAGE.

Background

L-Lactate Dehydrogenase A Chain (LDHA) is an enzyme that catalyzes the conversion of L-lactate and NAD⁺ to pyruvate and NADH in the final step of anaerobic glycolysis. LDHA contains an N-terminal coenzyme binding region, a central catalytic site, and at least nine utilized Lys acetylation and two Tyr phosphorylation sites. LDHA belongs to the lactate dehydrogenase family, expressed predominantly in muscle tissue. LDHA mutations have been linked to exertional myoglobinuria.

For Research Use Only

A Reliable Research Partner in Life Science and Medicine

Toll-free: 1-888-852-8623

Web: www.elabscience.com

Tel: 1-832-243-6086

Email: techsupport@elabscience.com

Fax: 1-832-243-6017