



SZABO SCANDIC

Part of Europa Biosite

Produktinformation



Forschungsprodukte & Biochemikalien



Zellkultur & Verbrauchsmaterial



Diagnostik & molekulare Diagnostik



Laborgeräte & Service

Weitere Information auf den folgenden Seiten!
See the following pages for more information!



Lieferung & Zahlungsart

siehe unsere [Liefer- und Versandbedingungen](#)

Zuschläge

- Mindermengenzuschlag
- Trockeneiszuschlag
- Gefahrgutzuschlag
- Expressversand

SZABO-SCANDIC HandelsgmbH

Quellenstraße 110, A-1100 Wien

T. +43(0)1 489 3961-0

F. +43(0)1 489 3961-7

mail@szabo-scandic.com

www.szabo-scandic.com

[linkedin.com/company/szaboscandic](https://www.linkedin.com/company/szaboscandic) 

Recombinant Human CFHR1 protein (His tag)

Catalog Number:PDEH100161



Note: Centrifuge before opening to ensure complete recovery of vial contents.

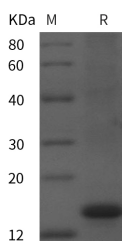
Description

Synonyms	Complement Factor H-Related Protein 1;FHR-1;H Factor-Like Protein 1;H-Factor-Like 1;H36;CFHR1;CFHL;CFHL1;CFHL1P;CFHR1P;FHR1;HFL1;HFL2
Species	Human
Expression Host	E.coli
Sequence	Thr205-Lys329
Accession	Q03591
Calculated Molecular Weight	13.6 kDa
Observed molecular weight	15 kDa
Tag	N-His

Properties

Purity	> 95 % as determined by reducing SDS-PAGE.
Endotoxin	Please contact us for more information.
Storage	Generally, lyophilized proteins are stable for up to 12 months when stored at -20 to -80°C. Reconstituted protein solution can be stored at 4-8°C for 2-7 days. Aliquots of reconstituted samples are stable at < -20°C for 3 months.
Shipping	This product is provided as lyophilized powder which is shipped with ice packs.
Formulation	Lyophilized from sterile PBS, pH 7.4. Normally 5 % - 8 % trehalose, mannitol and 0.01 % Tween80 are added as protectants before lyophilization. Please refer to the specific buffer information in the printed manual.
Reconstitution	Please refer to the printed manual for detailed information.

Data



> 95 % as determined by reducing SDS-PAGE.

Background

Complement Factor H-Related 1 (CFHR1) is a 43 kDa secreted member of the factor H family of glycoproteins. The human Complement Factor H protein family consists of the complement and immune regulators factor H; the factor H-like protein 1 (FHL-1) and five factor H-related proteins (CFHR-1 to -5). Members of the H-related protein family are exclusively composed of individually folded protein domains; termed short consensus repeats (SCRs) or complement control modules. FHR1 is produced by hepatocytes and circulates as two differentially glycosylated isoforms (37 kDa and 43 kDa). Mature human FHR1 is 312 amino acids in length. It contains five; approximately 60 aa SCRs that basically constitute the entire molecule. FHR1 may play a role in complement regulation; lipid metabolism and lipoprotein

For Research Use Only

A Reliable Research Partner in Life Science and Medicine

Toll-free: 1-888-852-8623

Web: www.elabscience.com

Tel: 1-832-243-6086

Email: techsupport@elabscience.com

Fax: 1-832-243-6017

Recombinant Human CFHR1 protein (His tag)

Catalog Number:PDEH100161



complexes that bind PMNs to LPS.

For Research Use Only

A Reliable Research Partner in Life Science and Medicine

Toll-free: 1-888-852-8623

Tel: 1-832-243-6086

Fax: 1-832-243-6017

Web: www.elabscience.com

Email: techsupport@elabscience.com