



SZABO SCANDIC

Part of Europa Biosite

Produktinformation



Forschungsprodukte & Biochemikalien



Zellkultur & Verbrauchsmaterial



Diagnostik & molekulare Diagnostik



Laborgeräte & Service

Weitere Information auf den folgenden Seiten!
See the following pages for more information!



Lieferung & Zahlungsart

siehe unsere [Liefer- und Versandbedingungen](#)

Zuschläge

- Mindermengenzuschlag
- Trockeneiszuschlag
- Gefahrgutzuschlag
- Expressversand

SZABO-SCANDIC HandelsgmbH

Quellenstraße 110, A-1100 Wien

T. +43(0)1 489 3961-0

F. +43(0)1 489 3961-7

mail@szabo-scandic.com

www.szabo-scandic.com

[linkedin.com/company/szaboscandic](https://www.linkedin.com/company/szaboscandic) 

Recombinant Human TAFI protein (His tag)

Catalog Number:PDEH100167



Note: Centrifuge before opening to ensure complete recovery of vial contents.

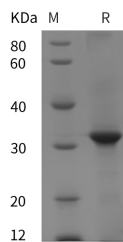
Description

Synonyms	Carboxypeptidase B2;Carboxypeptidase U;CPU;Plasma Carboxypeptidase B;pCPB;Thrombin-Activable Fibrinolysis Inhibitor;TAFI;CPB2
Species	Human
Expression Host	E.coli
Sequence	Glu 138-Val 386
Accession	Q96IY4
Calculated Molecular Weight	27.3 kDa
Observed molecular weight	32 kDa
Tag	N-His

Properties

Purity	> 95 % as determined by reducing SDS-PAGE.
Endotoxin	Please contact us for more information.
Storage	Generally, lyophilized proteins are stable for up to 12 months when stored at -20 to -80°C. Reconstituted protein solution can be stored at 4-8°C for 2-7 days. Aliquots of reconstituted samples are stable at < -20°C for 3 months.
Shipping	This product is provided as lyophilized powder which is shipped with ice packs.
Formulation	Lyophilized from sterile PBS, pH 7.4. Normally 5 % - 8 % trehalose, mannitol and 0.01 % Tween80 are added as protectants before lyophilization. Please refer to the specific buffer information in the printed manual.
Reconstitution	Please refer to the printed manual for detailed information.

Data



> 95 % as determined by reducing SDS-PAGE.

Background

Carboxypeptidase B2 (CPB2) is a secreted enzyme that belongs to the peptidase M14 family. CPB2 is synthesized by the liver and circulates in the plasma as a plasminogen-bound zymogen by the liver and circulates in the plasma as a plasminogen-bound zymogen. CPB2 cleaves C-terminal arginine or lysine residues from biologically active peptides, such as kinins or anaphylatoxins, in the circulation regulating their activities. CPB2 also down-regulates fibrinolysis by removing C-terminal lysine residues from fibrin that has already been partially degraded by plasmin. CPB2 exhibits carboxypeptidase activity when it is activated by proteolysis at residue Arg92 of the thrombin/thrombomodulin complex. Activated CPB2 reduces fibrinolysis by removing the fibrin C-terminal residues that are important for the binding and

For Research Use Only

A Reliable Research Partner in Life Science and Medicine

Toll-free: 1-888-852-8623

Web: www.elabscience.com

Tel: 1-832-243-6086

Email: techsupport@elabscience.com

Fax: 1-832-243-6017

Recombinant Human TAFI protein (His tag)

Catalog Number:PDEH100167



activation of plasminogen.

For Research Use Only

A Reliable Research Partner in Life Science and Medicine

Toll-free: 1-888-852-8623

Tel: 1-832-243-6086

Fax: 1-832-243-6017

Web: www.elabscience.com

Email: techsupport@elabscience.com