



# SZABO SCANDIC

Part of Europa Biosite

## Produktinformation



Forschungsprodukte & Biochemikalien



Zellkultur & Verbrauchsmaterial



Diagnostik & molekulare Diagnostik



Laborgeräte & Service

Weitere Information auf den folgenden Seiten!  
See the following pages for more information!



### Lieferung & Zahlungsart

siehe unsere [Liefer- und Versandbedingungen](#)

### Zuschläge

- Mindermengenzuschlag
- Trockeneiszuschlag
- Gefahrgutzuschlag
- Expressversand

### SZABO-SCANDIC HandelsgmbH

Quellenstraße 110, A-1100 Wien

T. +43(0)1 489 3961-0

F. +43(0)1 489 3961-7

[mail@szabo-scandic.com](mailto:mail@szabo-scandic.com)

[www.szabo-scandic.com](http://www.szabo-scandic.com)

[linkedin.com/company/szaboscandic](https://www.linkedin.com/company/szaboscandic) 

# Recombinant Human MASP1 protein (His tag)

Catalog Number:PDEH100170



**Note:** Centrifuge before opening to ensure complete recovery of vial contents.

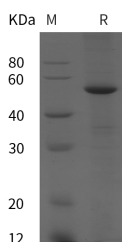
## Description

<b>Synonyms</b>	Mannan-Binding Lectin Serine Protease 1;Complement Factor MASP-3;Mannose-Binding Lectin-Associated Serine Protease 1;MASP-1;RaRF;Serine Protease 5;MASP1;CRARF;CRARF1;PRSS5
<b>Species</b>	Human
<b>Expression Host</b>	E.coli
<b>Sequence</b>	His 20-Ala 447
<b>Accession</b>	P48740
<b>Calculated Molecular Weight</b>	47.0 kDa
<b>Observed molecular weight</b>	48 kDa
<b>Tag</b>	N-His

## Properties

<b>Purity</b>	> 95 % as determined by reducing SDS-PAGE.
<b>Endotoxin</b>	Please contact us for more information.
<b>Storage</b>	Generally, lyophilized proteins are stable for up to 12 months when stored at -20 to -80°C. Reconstituted protein solution can be stored at 4-8°C for 2-7 days. Aliquots of reconstituted samples are stable at < -20°C for 3 months.
<b>Shipping</b>	This product is provided as lyophilized powder which is shipped with ice packs.
<b>Formulation</b>	Lyophilized from sterile PBS, pH 7.4. Normally 5 % - 8 % trehalose, mannitol and 0.01% Tween80 are added as protectants before lyophilization. Please refer to the specific buffer information in the printed manual.
<b>Reconstitution</b>	Please refer to the printed manual for detailed information.

## Data



> 95 % as determined by reducing SDS-PAGE.

## Background

Mannan-Binding Lectin Serine Protease 1 (MASP-1) belongs to the peptidase S1 family. MASP1 contains two CUB domains, one EGF-like domain, one peptidase S1 domain and two Sushi (CCP/SCR) domains. MASP1 is primarily expressed in liver. MASP1 involved in the lectin pathway of the complement, performs a key role in innate immunity by recognizing pathogens through patterns of sugar moieties and neutralizing them. MASP1 is synthesized as a zymogen and activated when it complexes with the pathogen recognition molecules of lectin pathway, the mannose-binding lectin and the ficolins. MASP1 is not directly involved in complement activation but may act as an amplifier of complement

## For Research Use Only

A Reliable Research Partner in Life Science and Medicine

Toll-free: 1-888-852-8623

Web: [www.elabscience.com](http://www.elabscience.com)

Tel: 1-832-243-6086

Email: [techsupport@elabscience.com](mailto:techsupport@elabscience.com)

Fax: 1-832-243-6017

# Recombinant Human MASP1 protein (His tag)

Catalog Number:PDEH100170



activation by cleaving complement C2 or by activating another complement serine protease, MASP2. MASP1 is also able to cleave fibrinogen and factor XIII and may may be involved in coagulation. MASP1 is inhibited by SERPING1 and A2M.

---

## For Research Use Only

A Reliable Research Partner in Life Science and Medicine

Toll-free: 1-888-852-8623

Tel: 1-832-243-6086

Fax: 1-832-243-6017

Web: [www.elabscience.com](http://www.elabscience.com)

Email: [techsupport@elabscience.com](mailto:techsupport@elabscience.com)