



SZABO SCANDIC

Part of Europa Biosite

Produktinformation



Forschungsprodukte & Biochemikalien



Zellkultur & Verbrauchsmaterial



Diagnostik & molekulare Diagnostik



Laborgeräte & Service

Weitere Information auf den folgenden Seiten!
See the following pages for more information!



Lieferung & Zahlungsart

siehe unsere [Liefer- und Versandbedingungen](#)

Zuschläge

- Mindermengenzuschlag
- Trockeneiszuschlag
- Gefahrgutzuschlag
- Expressversand

SZABO-SCANDIC HandelsgmbH

Quellenstraße 110, A-1100 Wien

T. +43(0)1 489 3961-0

F. +43(0)1 489 3961-7

mail@szabo-scandic.com

www.szabo-scandic.com

[linkedin.com/company/szaboscandic](https://www.linkedin.com/company/szaboscandic) 

Recombinant Human MCP-1 protein (GST tag)

Catalog Number:PDEH100193



Note: Centrifuge before opening to ensure complete recovery of vial contents.

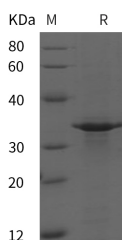
Description

Synonyms	C-C motif chemokine 2;HC11;Monocyte chemoattractant protein 1;MCAF;Monocyte chemotactic protein 1;MCP-1;Monocyte secretory protein JE;CCL2
Species	Human
Expression Host	E.coli
Sequence	Gln 24-Thr 99
Accession	P13500
Calculated Molecular Weight	33.3 kDa
Observed molecular weight	35 kDa
Tag	N-GST

Properties

Purity	> 95 % as determined by reducing SDS-PAGE.
Endotoxin	Please contact us for more information.
Storage	Generally, lyophilized proteins are stable for up to 12 months when stored at -20 to -80°C. Reconstituted protein solution can be stored at 4-8°C for 2-7 days. Aliquots of reconstituted samples are stable at < -20°C for 3 months.
Shipping	This product is provided as lyophilized powder which is shipped with ice packs.
Formulation	Lyophilized from sterile PBS, pH 7.4. Normally 5 % - 8 % trehalose, mannitol and 0.01 % Tween80 are added as protectants before lyophilization. Please refer to the specific buffer information in the printed manual.
Reconstitution	Please refer to the printed manual for detailed information.

Data



> 95 % as determined by reducing SDS-PAGE.

Background

The chemokine (C-C motif) ligand 2 (CCL2), also known as monocyte chemoattractant protein (MCP)-1 and small inducible cytokine A2 (SCYA2)), is a small cytokine that belongs to the CC chemokine family responsible for monocyte attraction. Its cognate receptor, CCR2, play a critical role in regulating nociceptive processes during neuropathic pain. Both CCL2 and CCR2 are implicated in induction of autoimmunity. CCL2 recruits monocytes, memory T cells, and dendritic cells to the sites of inflammation produced by either tissue injury or infection. Recently research also showed that CCL2 might be useful as a biomarker of fibrosis as well as a target for therapeutic intervention.

For Research Use Only

A Reliable Research Partner in Life Science and Medicine

Toll-free: 1-888-852-8623

Web: www.elabscience.com

Tel: 1-832-243-6086

Email: techsupport@elabscience.com

Fax: 1-832-243-6017