



# SZABO SCANDIC

Part of Europa Biosite

## Produktinformation



Forschungsprodukte & Biochemikalien



Zellkultur & Verbrauchsmaterial



Diagnostik & molekulare Diagnostik



Laborgeräte & Service

Weitere Information auf den folgenden Seiten!  
See the following pages for more information!



### Lieferung & Zahlungsart

siehe unsere [Liefer- und Versandbedingungen](#)

### Zuschläge

- Mindermengenzuschlag
- Trockeneiszuschlag
- Gefahrgutzuschlag
- Expressversand

### SZABO-SCANDIC HandelsgmbH

Quellenstraße 110, A-1100 Wien

T. +43(0)1 489 3961-0

F. +43(0)1 489 3961-7

[mail@szabo-scandic.com](mailto:mail@szabo-scandic.com)

[www.szabo-scandic.com](http://www.szabo-scandic.com)

[linkedin.com/company/szaboscandic](https://www.linkedin.com/company/szaboscandic) 

# Recombinant Human NPY protein (GST tag)

Catalog Number:PDEH100198



**Note:** Centrifuge before opening to ensure complete recovery of vial contents.

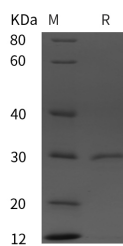
## Description

<b>Synonyms</b>	Pro-Neuropeptide Y;Neuropeptide Y;Neuropeptide Tyrosine;NPY;C-Flanking Peptide of NPY;CPON;NPY
<b>Species</b>	Human
<b>Expression Host</b>	E.coli
<b>Sequence</b>	Pro 30-Trp 97
<b>Accession</b>	P01303
<b>Calculated Molecular Weight</b>	32.4 kDa
<b>Observed molecular weight</b>	30 kDa
<b>Tag</b>	N-GST

## Properties

<b>Purity</b>	> 95 % as determined by reducing SDS-PAGE.
<b>Endotoxin</b>	Please contact us for more information.
<b>Storage</b>	Generally, lyophilized proteins are stable for up to 12 months when stored at -20 to -80°C. Reconstituted protein solution can be stored at 4-8°C for 2-7 days. Aliquots of reconstituted samples are stable at < -20°C for 3 months.
<b>Shipping</b>	This product is provided as lyophilized powder which is shipped with ice packs.
<b>Formulation</b>	Lyophilized from sterile PBS, pH 7.4. Normally 5 % - 8 % trehalose, mannitol and 0.01 % Tween80 are added as protectants before lyophilization. Please refer to the specific buffer information in the printed manual.
<b>Reconstitution</b>	Please refer to the printed manual for detailed information.

## Data



> 95 % as determined by reducing SDS-PAGE.

## Background

Pro-Neuropeptide Y (NPY) is a member of the NPY family. NPY is a secreted protein and is one of the most abundant peptides in the nervous system. It also can be found in some chromaffin cells of the adrenal medulla. NPY can be cleaved into Neuropeptide Y and C-flanking peptide of NPY chain, which regulates energy usage, and it is involved in learning, memory processing, and epilepsy. NPY is implicated in the control of feeding and in secretion of gonadotrophin-release hormone. In addition, NPY increases the proportion of energy stored as fat and blocks nociceptive signals to the brain.

## For Research Use Only

A Reliable Research Partner in Life Science and Medicine

Toll-free: 1-888-852-8623

Web: [www.elabscience.com](http://www.elabscience.com)

Tel: 1-832-243-6086

Email: [techsupport@elabscience.com](mailto:techsupport@elabscience.com)

Fax: 1-832-243-6017