



SZABO SCANDIC

Part of Europa Biosite

Produktinformation



Forschungsprodukte & Biochemikalien



Zellkultur & Verbrauchsmaterial



Diagnostik & molekulare Diagnostik



Laborgeräte & Service

Weitere Information auf den folgenden Seiten!
See the following pages for more information!



Lieferung & Zahlungsart

siehe unsere [Liefer- und Versandbedingungen](#)

Zuschläge

- Mindermengenzuschlag
- Trockeneiszuschlag
- Gefahrgutzuschlag
- Expressversand

SZABO-SCANDIC HandelsgmbH

Quellenstraße 110, A-1100 Wien

T. +43(0)1 489 3961-0

F. +43(0)1 489 3961-7

mail@szabo-scandic.com

www.szabo-scandic.com

[linkedin.com/company/szaboscandic](https://www.linkedin.com/company/szaboscandic) 

Recombinant Human APOH protein (His tag)

Catalog Number:PDEH100207



Note: Centrifuge before opening to ensure complete recovery of vial contents.

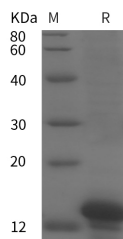
Description

Synonyms	Beta-2-Glycoprotein 1;APC inhibitor;Apolipoprotein H;Apo-H;Beta-2-Glycoprotein I;B2GPIBeta(2)GPI;APOH;B2G1;B2GP1;BG
Species	Human
Expression Host	E.coli
Sequence	Ser 263-Cys 345
Accession	P02749
Calculated Molecular Weight	9.0 kDa
Observed molecular weight	12 kDa
Tag	N-His

Properties

Purity	> 95 % as determined by reducing SDS-PAGE.
Endotoxin	Please contact us for more information.
Storage	Generally, lyophilized proteins are stable for up to 12 months when stored at -20 to -80°C. Reconstituted protein solution can be stored at 4-8°C for 2-7 days. Aliquots of reconstituted samples are stable at < -20°C for 3 months.
Shipping	This product is provided as lyophilized powder which is shipped with ice packs.
Formulation	Lyophilized from sterile PBS, pH 7.4. Normally 5 % - 8 % trehalose, mannitol and 0.01 % Tween80 are added as protectants before lyophilization. Please refer to the specific buffer information in the printed manual.
Reconstitution	Please refer to the printed manual for detailed information.

Data



> 95 % as determined by reducing SDS-PAGE.

Background

Apolipoprotein H (APOH), also known as Beta-2-glycoprotein 1, Activated protein C-binding protein, B2GPI, and B2G1, is a glycoprotein synthesized by liver cells and it is present in the blood associated with plasma lipoproteins. It is an essential cofactor for the binding of certain antiphospholipid antibodies (APA) to anionic phospholipid. APOH binds to various kinds of negatively charged substances such as heparin, phospholipids, and dextran sulfate. APOH may prevent activation of the intrinsic blood coagulation cascade by binding to phospholipids on the surface of damaged cells. The activity of APOH appears to involve the binding of agglutinating, negatively charged compounds, and inhibits agglutination by the contact activation of the intrinsic blood coagulation pathway. APOH causes a reduction of the

For Research Use Only

A Reliable Research Partner in Life Science and Medicine

Toll-free: 1-888-852-8623

Web: www.elabscience.com

Tel: 1-832-243-6086

Email: techsupport@elabscience.com

Fax: 1-832-243-6017

Recombinant Human APOH protein (His tag)

Catalog Number: PDEH100207



prothrombinase binding sites on platelets and reduces the activation caused by collagen when thrombin is present at physiological serum concentrations of APOH suggesting a regulatory role of APOH in coagulation. APOH plasma concentrations are strongly associated to metabolic syndrome alterations and vascular disease in type 2 diabetic and could be considered as a clinical marker of cardiovascular risk. APOH is found on several classes of lipoproteins, and is involved in the activation of lipoprotein lipase in lipid metabolism. This single-chain glycoprotein also has been implicated in several physiologic pathways including coagulation and the production of hypertension, which are related to the pathogenesis of primary cerebral hemorrhage (PICH).

For Research Use Only

A Reliable Research Partner in Life Science and Medicine

Toll-free: 1-888-852-8623

Tel: 1-832-243-6086

Fax: 1-832-243-6017

Web: www.elabscience.com

Email: techsupport@elabscience.com