



SZABO SCANDIC

Part of Europa Biosite

Produktinformation



Forschungsprodukte & Biochemikalien



Zellkultur & Verbrauchsmaterial



Diagnostik & molekulare Diagnostik



Laborgeräte & Service

Weitere Information auf den folgenden Seiten!
See the following pages for more information!



Lieferung & Zahlungsart

siehe unsere [Liefer- und Versandbedingungen](#)

Zuschläge

- Mindermengenzuschlag
- Trockeneiszuschlag
- Gefahrgutzuschlag
- Expressversand

SZABO-SCANDIC HandelsgmbH

Quellenstraße 110, A-1100 Wien

T. +43(0)1 489 3961-0

F. +43(0)1 489 3961-7

mail@szabo-scandic.com

www.szabo-scandic.com

[linkedin.com/company/szaboscandic](https://www.linkedin.com/company/szaboscandic) 

Recombinant Human Synuclein-??SNCA? protein (His tag)

DIA • AN[®]
by Elabscience

Catalog Number:PDEH100221

Note: Centrifuge before opening to ensure complete recovery of vial contents.

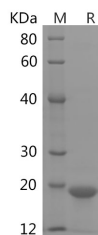
Description

| | |
|------------------------------------|---|
| Synonyms | Vascular endothelial growth factor receptor 2;KDR;VEGFR-2;Fetal liver kinase 1;FLK-1;Kinase insert domain receptor;Protein-tyrosine kinase receptor flk-1;CD309;Flk-1;FLK1;VEGFR;VEGFR2 |
| Species | Human |
| Expression Host | E.coli |
| Sequence | Met 1-Ala 140 |
| Accession | P37840 |
| Calculated Molecular Weight | 15.3 kDa |
| Observed molecular weight | 19 kDa |
| Tag | N-His & C-His |

Properties

| | |
|-----------------------|---|
| Purity | > 95 % as determined by reducing SDS-PAGE. |
| Endotoxin | Please contact us for more information. |
| Storage | Generally, lyophilized proteins are stable for up to 12 months when stored at -20 to -80°C. Reconstituted protein solution can be stored at 4-8°C for 2-7 days. Aliquots of reconstituted samples are stable at < -20°C for 3 months. |
| Shipping | This product is provided as lyophilized powder which is shipped with ice packs. |
| Formulation | Lyophilized from sterile PBS, pH 7.4. Normally 5 % - 8 % trehalose, mannitol and 0.01 % Tween80 are added as protectants before lyophilization. Please refer to the specific buffer information in the printed manual. |
| Reconstitution | Please refer to the printed manual for detailed information. |

Data



> 95 % as determined by reducing SDS-PAGE.

Background

Alpha-Synuclein (alpha-Syn), also known as NACP or SNCA, exists as at least two structural isoforms: one is helix-rich, membrane-bound form that both the N- and C-terminal regions of alpha-synuclein are tightly associated with membranes and the other is disordered, cytosolic form. Synuclein is found predominantly in the presynaptic termini, in both free or membrane-bound forms. SNCA is extensively localized in nucleus of neurons. It has been shown that alpha-Synuclein was highly expressed in the mitochondria in olfactory bulb, hippocampus, striatum, and thalamus, where the cytosolic alpha-Synuclein was also rich. Normally the unstructured soluble type of alpha-synuclein can aggregate to form insoluble fibrils

For Research Use Only

A Reliable Research Partner in Life Science and Medicine

Toll-free: 1-888-852-8623

Tel: 1-832-243-6086

Fax: 1-832-243-6017

Web: www.elabscience.com

Email: techsupport@elabscience.com

Recombinant Human Synuclein-??SNCA? protein (His tag)



Catalog Number:PDEH100221

in pathological conditions characterized by Lewy bodies, such as Parkinson's disease, dementia with Lewy bodies and multiple system atrophy. SNCA abnormality and mitochondrial deficiency are two major changes in the brain of patients with Parkinson's disease (PD). In addition, alpha-synuclein is an abundant component of Lewy bodies in sporadic Parkinson's disease and diffuse Lewy body disease.

For Research Use Only

A Reliable Research Partner in Life Science and Medicine

Toll-free: 1-888-852-8623

Tel: 1-832-243-6086

Fax: 1-832-243-6017

Web: www.elabscience.com

Email: techsupport@elabscience.com