



SZABO SCANDIC

Part of Europa Biosite

Produktinformation



Forschungsprodukte & Biochemikalien



Zellkultur & Verbrauchsmaterial



Diagnostik & molekulare Diagnostik



Laborgeräte & Service

Weitere Information auf den folgenden Seiten!
See the following pages for more information!



Lieferung & Zahlungsart

siehe unsere [Liefer- und Versandbedingungen](#)

Zuschläge

- Mindermengenzuschlag
- Trockeneiszuschlag
- Gefahrgutzuschlag
- Expressversand

SZABO-SCANDIC HandelsgmbH

Quellenstraße 110, A-1100 Wien

T. +43(0)1 489 3961-0

F. +43(0)1 489 3961-7

mail@szabo-scandic.com

www.szabo-scandic.com

[linkedin.com/company/szaboscandic](https://www.linkedin.com/company/szaboscandic) 

Recombinant Human SMOC2 protein (His tag)

Catalog Number:PDEH100244



Note: Centrifuge before opening to ensure complete recovery of vial contents.

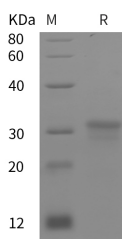
Description

Synonyms	MST117;MSTP117;MSTP140;Secreted modular calcium binding protein 2;SMAP 2;SMAP-2;Smooth muscle associated protein 2
Species	Human
Expression Host	E.coli
Sequence	Gln 229-Val 415
Accession	Q9H3U7
Calculated Molecular Weight	20.5 kDa
Observed molecular weight	32 kDa
Tag	N-His

Properties

Purity	> 95 % as determined by reducing SDS-PAGE.
Endotoxin	Please contact us for more information.
Storage	Generally, lyophilized proteins are stable for up to 12 months when stored at -20 to -80°C. Reconstituted protein solution can be stored at 4-8°C for 2-7 days. Aliquots of reconstituted samples are stable at < -20°C for 3 months.
Shipping	This product is provided as lyophilized powder which is shipped with ice packs.
Formulation	Lyophilized from sterile PBS, pH 7.4. Normally 5 % - 8 % trehalose, mannitol and 0.01 % Tween80 are added as protectants before lyophilization. Please refer to the specific buffer information in the printed manual.
Reconstitution	Please refer to the printed manual for detailed information.

Data



> 95 % as determined by reducing SDS-PAGE.

Background

SMOC-2 (secreted, or SPARC-related, modular calcium-binding protein 2), previously called SMAP2 (smooth muscle-associated protein 2), is a 55 kDa glycoprotein that is a member of the SPARC family of matricellular proteins. The human SMOC-2 cDNA encodes 446 amino acids (aa), including a 21 aa signal sequence, a Kazal-like domain (aa 40 - 84), two thyroglobulin type-1 segments (aa 87 - 153 and 213 - 281) and two EF-hand sequences (aa 347 - 382 and 384 - 419). Of three splice variants, one shows a 13 aa substitution for aa 442 - 446, another shows an 11 aa insertion after Thr170, and a third contains both of these variations. SMOC-2 is widely expressed in the extracellular matrix and appears to have adhesion-related functions. Recombinant bacterially produced human SMOC-1 and SMOC-2 can bind the acute

For Research Use Only

A Reliable Research Partner in Life Science and Medicine

Toll-free: 1-888-852-8623

Web: www.elabscience.com

Tel: 1-832-243-6086

Email: techsupport@elabscience.com

Fax: 1-832-243-6017

Recombinant Human SMOC2 protein (His tag)

Catalog Number:PDEH100244



phase protein, C-reactive protein, and the adhesion proteins, fibulin and vitronectin, while keratinocyte SMOC-2 binds integrins alpha v beta 1 and alpha v beta 6. SMOC-2 promotes cell cycle progression by signaling through the integrin-linked kinase (ILK) to upregulate cyclin-D1. When expressed in the endothelial extracellular matrix, it potentiates growth factor-induced angiogenesis. SMOC-2 expression is upregulated during neointima formation, promoting proliferation and migration of vascular smooth muscle. In the skin, it promotes keratinocyte attachment and migration. Since Kazal and thyroglobulin domains are often found in protease inhibitors, SMOC-2 is also proposed to inhibit proteases in the lung and artery.

For Research Use Only

A Reliable Research Partner in Life Science and Medicine

Toll-free: 1-888-852-8623

Tel: 1-832-243-6086

Fax: 1-832-243-6017

Web: www.elabscience.com

Email: techsupport@elabscience.com