



SZABO SCANDIC

Part of Europa Biosite

Produktinformation



Forschungsprodukte & Biochemikalien



Zellkultur & Verbrauchsmaterial



Diagnostik & molekulare Diagnostik



Laborgeräte & Service

Weitere Information auf den folgenden Seiten!
See the following pages for more information!



Lieferung & Zahlungsart

siehe unsere [Liefer- und Versandbedingungen](#)

Zuschläge

- Mindermengenzuschlag
- Trockeneiszuschlag
- Gefahrgutzuschlag
- Expressversand

SZABO-SCANDIC HandelsgmbH

Quellenstraße 110, A-1100 Wien

T. +43(0)1 489 3961-0

F. +43(0)1 489 3961-7

mail@szabo-scandic.com

www.szabo-scandic.com

[linkedin.com/company/szaboscandic](https://www.linkedin.com/company/szaboscandic) 

Recombinant Human CaSR protein (His tag)

Catalog Number:PDEH100250



Note: Centrifuge before opening to ensure complete recovery of vial contents.

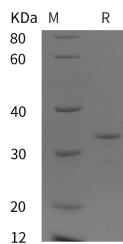
Description

| | |
|------------------------------------|--|
| Synonyms | Ca sensing receptor;Ca ²⁺ sensing receptor 1;CAR;EIG8;Extracellular calcium sensing receptor;FHH;FIH;GPRC2A;HHC1;NSHPT;PCAR 1;PCaR1 |
| Species | Human |
| Expression Host | E.coli |
| Sequence | Lys 863-Ser 1078 |
| Accession | P41180 |
| Calculated Molecular Weight | 23.7 kDa |
| Observed molecular weight | 35 kDa |
| Tag | N-His |

Properties

| | |
|-----------------------|---|
| Purity | > 95 % as determined by reducing SDS-PAGE. |
| Endotoxin | Please contact us for more information. |
| Storage | Generally, lyophilized proteins are stable for up to 12 months when stored at -20 to -80°C. Reconstituted protein solution can be stored at 4-8°C for 2-7 days. Aliquots of reconstituted samples are stable at < -20°C for 3 months. |
| Shipping | This product is provided as lyophilized powder which is shipped with ice packs. |
| Formulation | Lyophilized from sterile PBS, pH 7.4. Normally 5 % - 8 % trehalose, mannitol and 0.01 % Tween80 are added as protectants before lyophilization. Please refer to the specific buffer information in the printed manual. |
| Reconstitution | Please refer to the printed manual for detailed information. |

Data



> 95 % as determined by reducing SDS-PAGE.

Background

CaSR, the extracellular Calcium-Sensing Receptor, is a widely expressed G-protein coupled receptor (GPCR) involved in calcium homeostasis. CaSR operates as a sensor in parathyroid and kidney, and alterations in its activity have been shown to cause thyroid disease in humans. Activation of the receptor in response to extracellular calcium or other ligands causes activation of phospholipase C (PLC), release of IP₃ and release of calcium from intracellular stores. Proinflammatory cytokines IL-1 β and TNF- α increase CaSR gene expression in human thyroid and kidney cells through activation of the NF- κ B pathway, and this pathway may be involved in hypocalcemia often seen in critically ill patients. Elevated calcium concentration and CaSR expression have been linked to proliferation and metastasis of skeletal metastatic prostate cancer

For Research Use Only

A Reliable Research Partner in Life Science and Medicine

Toll-free: 1-888-852-8623

Web: www.elabscience.com

Tel: 1-832-243-6086

Email: techsupport@elabscience.com

Fax: 1-832-243-6017

Recombinant Human CaSR protein (His tag)

Catalog Number:PDEH100250



cell lines. In intestinal epithelial cells, CaSR is involved in regulation of cyclic nucleotide metabolism and the fluid secretion that results in life-threatening fluid loss in response to intestinal pathogens. The interaction of CaSR with the actin-binding protein filamin may provide scaffolding for the organization of signaling pathways converging on the cytoskeleton, including CaSR-mediated MAPK pathway activation.

For Research Use Only

A Reliable Research Partner in Life Science and Medicine

Toll-free: 1-888-852-8623

Tel: 1-832-243-6086

Fax: 1-832-243-6017

Web: www.elabscience.com

Email: techsupport@elabscience.com