



SZABO SCANDIC

Part of Europa Biosite

Produktinformation



Forschungsprodukte & Biochemikalien



Zellkultur & Verbrauchsmaterial



Diagnostik & molekulare Diagnostik



Laborgeräte & Service

Weitere Information auf den folgenden Seiten!
See the following pages for more information!



Lieferung & Zahlungsart

siehe unsere [Liefer- und Versandbedingungen](#)

Zuschläge

- Mindermengenzuschlag
- Trockeneiszuschlag
- Gefahrgutzuschlag
- Expressversand

SZABO-SCANDIC HandelsgmbH

Quellenstraße 110, A-1100 Wien

T. +43(0)1 489 3961-0

F. +43(0)1 489 3961-7

mail@szabo-scandic.com

www.szabo-scandic.com

[linkedin.com/company/szaboscandic](https://www.linkedin.com/company/szaboscandic) 

Recombinant Human MMP-2/CLG4A protein (His tag)



Catalog Number:PDEH100282

Note: Centrifuge before opening to ensure complete recovery of vial contents.

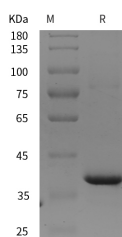
Description

Synonyms	72 kDa Type IV Collagenase;72 kDa Gelatinase;Gelatinase A;Matrix Metalloproteinase-2;MMP-2;TBE-1;MMP2;CLG4A;CLG4;MMP-II;MONA;TBE-1
Species	Human
Expression Host	E.coli
Sequence	Lys 36-Gly 341
Accession	P08253
Calculated Molecular Weight	33.6 kDa
Observed molecular weight	40 kDa
Tag	N-His

Properties

Purity	> 95 % as determined by reducing SDS-PAGE.
Endotoxin	Please contact us for more information.
Storage	Generally, lyophilized proteins are stable for up to 12 months when stored at -20 to -80°C. Reconstituted protein solution can be stored at 4-8°C for 2-7 days. Aliquots of reconstituted samples are stable at < -20°C for 3 months.
Shipping	This product is provided as lyophilized powder which is shipped with ice packs.
Formulation	Lyophilized from sterile PBS, pH 7.4. Normally 5 % - 8 % trehalose, mannitol and 0.01 % Tween80 are added as protectants before lyophilization. Please refer to the specific buffer information in the printed manual.
Reconstitution	Please refer to the printed manual for detailed information.

Data



> 95 % as determined by reducing SDS-PAGE.

Background

Matrix Metalloproteinase-2 (MMP-2) is an enzyme that degrades components of the extracellular matrix and thus plays a pivotal role in cell migration during physiological and pathological processes. MMP-2 expression is dependent on extracellular matrix metalloproteinase inducer (EMMPRIN); Her2/neu; growth factors; cytokines; and hormones. Pro-MMP-2 activation needs MT1-MMP and TIMP-2 contribution. MMP-2 is changed in distribution and increased in amount in the ventral cochlear nucleus after unilateral cochlear ablation. A low level of MMP-2 is linked to favorable prognosis in patients with a hormone receptor-negative tumor; usually associated with high risk. As a zymogen requiring proteolytic activation for catalytic activity; MMP-2 has been implicated broadly in the invasion and metastasis of many

For Research Use Only

A Reliable Research Partner in Life Science and Medicine

Toll-free: 1-888-852-8623

Tel: 1-832-243-6086

Fax: 1-832-243-6017

Web: www.elabscience.com

Email: techsupport@elabscience.com

Recombinant Human MMP-2/CLG4A protein (His tag)



Catalog Number:PDEH100282

cancer model systems; including human breast cancer (HBC). Blocking MMP-2 secretion and activation during breast carcinoma development may decrease metastasis. The detection of active MMP-2 alone or the rate of pro-MMP-2 and active MMP-2 is considered a very sensitive indicator of cancer metastasis. Modulation of MMP-2 expression and activation through specific inhibitors and activators may thus provide a new mechanism for breast cancer treatment.

For Research Use Only

A Reliable Research Partner in Life Science and Medicine

Toll-free: 1-888-852-8623

Tel: 1-832-243-6086

Fax: 1-832-243-6017

Web: www.elabscience.com

Email: techsupport@elabscience.com