



SZABO SCANDIC

Part of Europa Biosite

Produktinformation



Forschungsprodukte & Biochemikalien



Zellkultur & Verbrauchsmaterial



Diagnostik & molekulare Diagnostik



Laborgeräte & Service

Weitere Information auf den folgenden Seiten!
See the following pages for more information!



Lieferung & Zahlungsart

siehe unsere [Liefer- und Versandbedingungen](#)

Zuschläge

- Mindermengenzuschlag
- Trockeneiszuschlag
- Gefahrgutzuschlag
- Expressversand

SZABO-SCANDIC HandelsgmbH

Quellenstraße 110, A-1100 Wien

T. +43(0)1 489 3961-0

F. +43(0)1 489 3961-7

mail@szabo-scandic.com

www.szabo-scandic.com

[linkedin.com/company/szaboscandic](https://www.linkedin.com/company/szaboscandic) 

Recombinant Human PSMA / FOLH1 protein (His tag)



Catalog Number:PDEH100287

Note: Centrifuge before opening to ensure complete recovery of vial contents.

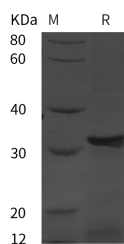
Description

Synonyms	Glutamate carboxypeptidase 2;FGCP;GCPII;mGCP;NAALADase I;PSMA;Cell growth-inhibiting gene 27 protein;Folate hydrolase 1;FOLH1;GCP2;FGCP;GCPII;Mgcp;NAALADase I;FOLH;mGCP;NAALAD1;NAALADase;PSM;PSMA
Species	Human
Expression Host	E.coli
Sequence	Tyr 471-Ala 750
Accession	Q04609
Calculated Molecular Weight	30.7 kDa
Observed molecular weight	31 kDa
Tag	N-His

Properties

Purity	> 95 % as determined by reducing SDS-PAGE.
Endotoxin	Please contact us for more information.
Storage	Generally, lyophilized proteins are stable for up to 12 months when stored at -20 to -80°C. Reconstituted protein solution can be stored at 4-8°C for 2-7 days. Aliquots of reconstituted samples are stable at < -20°C for 3 months.
Shipping	This product is provided as lyophilized powder which is shipped with ice packs.
Formulation	Lyophilized from sterile PBS, pH 7.4. Normally 5 % - 8 % trehalose, mannitol and 0.01 % Tween80 are added as protectants before lyophilization. Please refer to the specific buffer information in the printed manual.
Reconstitution	Please refer to the printed manual for detailed information.

Data



> 95 % as determined by reducing SDS-PAGE.

Background

Glutamate carboxypeptidase 2, also known as FOLH1, PSMA, belongs to the M28B subfamily and the peptidase M28 family. It is highly expressed in prostate epithelium and can be detected in urinary bladder, kidney, testis, ovary, fallopian tube, breast, adrenal gland, liver, esophagus, stomach, small intestine, colon and brain (at protein level). PSMA is used as a diagnostic and prognostic indicator of prostate cancer, and as a possible marker for various neurological disorders such as schizophrenia, Alzheimer disease and Huntington disease. It has both folate hydrolase and N-acetylated-alpha-linked-

For Research Use Only

A Reliable Research Partner in Life Science and Medicine

Toll-free: 1-888-852-8623

Web: www.elabscience.com

Tel: 1-832-243-6086

Email: techsupport@elabscience.com

Fax: 1-832-243-6017

Recombinant Human PSMA / FOLH1 protein (His tag)



Catalog Number:PDEH100287

acidic dipeptidase (NAALADase) activity and has a preference for tri-alpha-glutamate peptides. PSMA involves in prostate tumor progression and also exhibits a dipeptidyl-peptidase IV type activity. In vitro, PSMA cleaves Gly-Pro-AMC. PSMA is stable at pH greater than 6.5.

For Research Use Only

A Reliable Research Partner in Life Science and Medicine

Toll-free: 1-888-852-8623

Tel: 1-832-243-6086

Fax: 1-832-243-6017

Web: www.elabscience.com

Email: techsupport@elabscience.com