



# SZABO SCANDIC

Part of Europa Biosite

## Produktinformation



Forschungsprodukte & Biochemikalien



Zellkultur & Verbrauchsmaterial



Diagnostik & molekulare Diagnostik



Laborgeräte & Service

Weitere Information auf den folgenden Seiten!  
See the following pages for more information!



### Lieferung & Zahlungsart

siehe unsere [Liefer- und Versandbedingungen](#)

### Zuschläge

- Mindermengenzuschlag
- Trockeneiszuschlag
- Gefahrgutzuschlag
- Expressversand

### SZABO-SCANDIC HandelsgmbH

Quellenstraße 110, A-1100 Wien

T. +43(0)1 489 3961-0

F. +43(0)1 489 3961-7

[mail@szabo-scandic.com](mailto:mail@szabo-scandic.com)

[www.szabo-scandic.com](http://www.szabo-scandic.com)

[linkedin.com/company/szaboscandic](https://www.linkedin.com/company/szaboscandic)

# Recombinant Human KLK2 protein (His tag)

Catalog Number:PDEH100290



**Note:** Centrifuge before opening to ensure complete recovery of vial contents.

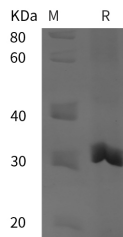
## Description

<b>Synonyms</b>	Signal Transduction;Cell biology;Cancer
<b>Species</b>	Human
<b>Expression Host</b>	E.coli
<b>Sequence</b>	Ile 25-Pro 261
<b>Accession</b>	P20151
<b>Calculated Molecular Weight</b>	26.0 kDa
<b>Observed molecular weight</b>	31 kDa
<b>Tag</b>	N-His

## Properties

<b>Purity</b>	> 95 % as determined by reducing SDS-PAGE.
<b>Endotoxin</b>	Please contact us for more information.
<b>Storage</b>	Generally, lyophilized proteins are stable for up to 12 months when stored at -20 to -80°C. Reconstituted protein solution can be stored at 4-8°C for 2-7 days. Aliquots of reconstituted samples are stable at < -20°C for 3 months.
<b>Shipping</b>	This product is provided as lyophilized powder which is shipped with ice packs.
<b>Formulation</b>	Lyophilized from sterile PBS, pH 7.4. Normally 5 % - 8 % trehalose, mannitol and 0.01 % Tween80 are added as protectants before lyophilization. Please refer to the specific buffer information in the printed manual.
<b>Reconstitution</b>	Please refer to the printed manual for detailed information.

## Data



> 95 % as determined by reducing SDS-PAGE.

## Background

Kallikrein-2 (KLK2) is a secreted serine protease that belongs to the peptidase S1 family of Kallikrein subfamily. KLK2 contains 1 peptidase S1 domain. It is highly expressed in the human prostate gland. KLK2 can cleave Met-Lys and Arg-Ser bonds in kininogen to release Lys-bradykinin, but Preferential cleavages of Arg-I-Xaa bonds in small molecule substrates. It also highly selective action to release kallidin (lysyl-bradykinin) from kininogen involves hydrolysis of Met-I-Xaa or Leu-I-Xaa. KLK2 is inhibited by serpins such as protein C inhibitor, antichymotrypsin, and plasminogen. KLK2 is considered to be a biomarker for prostate cancer.

## For Research Use Only

A Reliable Research Partner in Life Science and Medicine

Toll-free: 1-888-852-8623

Web: [www.elabscience.com](http://www.elabscience.com)

Tel: 1-832-243-6086

Email: [techsupport@elabscience.com](mailto:techsupport@elabscience.com)

Fax: 1-832-243-6017