



# SZABO SCANDIC

Part of Europa Biosite

## Produktinformation



Forschungsprodukte & Biochemikalien



Zellkultur & Verbrauchsmaterial



Diagnostik & molekulare Diagnostik



Laborgeräte & Service

Weitere Information auf den folgenden Seiten!  
See the following pages for more information!



### Lieferung & Zahlungsart

siehe unsere [Liefer- und Versandbedingungen](#)

### Zuschläge

- Mindermengenzuschlag
- Trockeneiszuschlag
- Gefahrgutzuschlag
- Expressversand

### SZABO-SCANDIC HandelsgmbH

Quellenstraße 110, A-1100 Wien

T. +43(0)1 489 3961-0

F. +43(0)1 489 3961-7

[mail@szabo-scandic.com](mailto:mail@szabo-scandic.com)

[www.szabo-scandic.com](http://www.szabo-scandic.com)

[linkedin.com/company/szaboscandic](https://www.linkedin.com/company/szaboscandic) 

# Recombinant Human CD62L/L-Selectin protein (His tag)



Catalog Number:PDEH100294

**Note:** Centrifuge before opening to ensure complete recovery of vial contents.

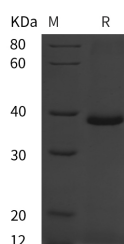
## Description

<b>Synonyms</b>	L-selectin;Sell;CD62 antigen-like family member L;Leukocyte adhesion molecule 1 (LAM-1);Leukocyte-endothelial cell adhesion molecule 1;Lymph node homing receptor;Lymphocyte antigen 22 (Ly-22);Lymphocyte surface MEL-14 antigen;CD62L
<b>Species</b>	Human
<b>Expression Host</b>	E.coli
<b>Sequence</b>	Trp 39-Asn 332
<b>Accession</b>	P30836
<b>Calculated Molecular Weight</b>	32.2 kDa
<b>Observed molecular weight</b>	39 kDa
<b>Tag</b>	N-His

## Properties

<b>Purity</b>	> 95 % as determined by reducing SDS-PAGE.
<b>Endotoxin</b>	Please contact us for more information.
<b>Storage</b>	Generally, lyophilized proteins are stable for up to 12 months when stored at -20 to -80°C. Reconstituted protein solution can be stored at 4-8°C for 2-7 days. Aliquots of reconstituted samples are stable at < -20°C for 3 months.
<b>Shipping</b>	This product is provided as lyophilized powder which is shipped with ice packs.
<b>Formulation</b>	Lyophilized from sterile PBS, pH 7.4. Normally 5 % - 8 % trehalose, mannitol and 0.01% Tween80 are added as protectants before lyophilization. Please refer to the specific buffer information in the printed manual.
<b>Reconstitution</b>	Please refer to the printed manual for detailed information.

## Data



> 95 % as determined by reducing SDS-PAGE.

## Background

L-Selectin (also known as Leukocyte Selectin, LAM-1, LECAM-1, LECCAM-1, TQ1, Leu-8, MEL-14 antigen, DREG, lymph node homing receptor, CD62L), a member of the Selectin family, is a cell surface glycoprotein expressed constitutively on a wide variety of leukocytes. Two forms of L?Selectin have been reported, apparently arising as a result of post-translational modifications. The lymphocyte form shows an apparent molecular weight of 74 kDa, while the neutrophil form is 90 - 100 kDa. Human and mouse L?Selectin share 76% amino acid (aa) sequence homology.L?Selectin

## For Research Use Only

A Reliable Research Partner in Life Science and Medicine

Toll-free: 1-888-852-8623

Web: [www.elabscience.com](http://www.elabscience.com)

Tel: 1-832-243-6086

Email: [techsupport@elabscience.com](mailto:techsupport@elabscience.com)

Fax: 1-832-243-6017

# Recombinant Human CD62L/L-Selectin protein (His tag)



Catalog Number:PDEH100294

---

plays a role in the migration of lymphocytes into peripheral lymph nodes and sites of chronic inflammation, and of neutrophils into acute inflammatory sites. Acting in cooperation with P-Selectin and E-Selectin, L?Selectin mediates the initial interaction of circulating leukocytes with endothelial cells that produces a characteristic "rolling" of the leukocytes on the endothelium. This initial interaction, also involving ICAM-1 and VCAM-1, leads eventually to extravasation of the white blood cell through the blood vessel wall into the extracellular matrix tissue.

---

## For Research Use Only

A Reliable Research Partner in Life Science and Medicine

Toll-free: 1-888-852-8623

Tel: 1-832-243-6086

Fax: 1-832-243-6017

Web: [www.elabscience.com](http://www.elabscience.com)

Email: [techsupport@elabscience.com](mailto:techsupport@elabscience.com)