



SZABO SCANDIC

Part of Europa Biosite

Produktinformation



Forschungsprodukte & Biochemikalien



Zellkultur & Verbrauchsmaterial



Diagnostik & molekulare Diagnostik



Laborgeräte & Service

Weitere Information auf den folgenden Seiten!
See the following pages for more information!



Lieferung & Zahlungsart

siehe unsere [Liefer- und Versandbedingungen](#)

Zuschläge

- Mindermengenzuschlag
- Trockeneiszuschlag
- Gefahrgutzuschlag
- Expressversand

SZABO-SCANDIC HandelsgmbH

Quellenstraße 110, A-1100 Wien

T. +43(0)1 489 3961-0

F. +43(0)1 489 3961-7

mail@szabo-scandic.com

www.szabo-scandic.com

[linkedin.com/company/szaboscandic](https://www.linkedin.com/company/szaboscandic) 

Recombinant Human LDHB protein (His tag)

Catalog Number:PDEH100298



Note: Centrifuge before opening to ensure complete recovery of vial contents.

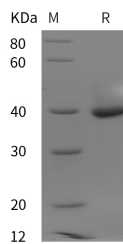
Description

Synonyms	L-lactate Dehydrogenase B Chain;LDH-B;LDH Heart Subunit;LDH-H;Renal Carcinoma Antigen NY-REN-46;LDHB
Species	Human
Expression Host	E.coli
Sequence	Ala 2-Leu334
Accession	P07195
Calculated Molecular Weight	36.5 kDa
Observed molecular weight	40 kDa
Tag	N-His

Properties

Purity	> 95 % as determined by reducing SDS-PAGE.
Endotoxin	Please contact us for more information.
Storage	Generally, lyophilized proteins are stable for up to 12 months when stored at -20 to -80°C. Reconstituted protein solution can be stored at 4-8°C for 2-7 days. Aliquots of reconstituted samples are stable at < -20°C for 3 months.
Shipping	This product is provided as lyophilized powder which is shipped with ice packs.
Formulation	Lyophilized from sterile PBS, pH 7.4. Normally 5 % - 8 % trehalose, mannitol and 0.01 % Tween80 are added as protectants before lyophilization. Please refer to the specific buffer information in the printed manual.
Reconstitution	Please refer to the printed manual for detailed information.

Data



> 95 % as determined by reducing SDS-PAGE.

Background

L-Lactate Dehydrogenase B Chain (LDH-B) is a member of the lactate dehydrogenase family that consists of three members, LDH-A, LDH-B and LDH-C; members of this family function as powerful markers for germ cell tumors. LDH-B is an oxidoreductase that catalyzes the interconversion of pyruvate and lactate with concomitant interconversion of NADH and NAD⁺. It converts pyruvate to lactate when oxygen is absent or in short supply and it performs the reverse reaction during the Cori cycle in the liver. It is also called Hydroxybutyrate Dehydrogenase (HBD) due to its ability to catalyze the oxidation of hydroxybutyrate.

For Research Use Only

A Reliable Research Partner in Life Science and Medicine

Toll-free: 1-888-852-8623

Web: www.elabscience.com

Tel: 1-832-243-6086

Email: techsupport@elabscience.com

Fax: 1-832-243-6017