



# SZABO SCANDIC

Part of Europa Biosite

## Produktinformation



Forschungsprodukte & Biochemikalien



Zellkultur & Verbrauchsmaterial



Diagnostik & molekulare Diagnostik



Laborgeräte & Service

Weitere Information auf den folgenden Seiten!  
See the following pages for more information!



### Lieferung & Zahlungsart

siehe unsere [Liefer- und Versandbedingungen](#)

### Zuschläge

- Mindermengenzuschlag
- Trockeneiszuschlag
- Gefahrgutzuschlag
- Expressversand

### SZABO-SCANDIC HandelsgmbH

Quellenstraße 110, A-1100 Wien

T. +43(0)1 489 3961-0

F. +43(0)1 489 3961-7

[mail@szabo-scandic.com](mailto:mail@szabo-scandic.com)

[www.szabo-scandic.com](http://www.szabo-scandic.com)

[linkedin.com/company/szaboscandic](https://www.linkedin.com/company/szaboscandic) 

# Recombinant Human Kallikrein 6/KLK6 Protein (His tag)



Catalog Number:PDEH100302

**Note:** Centrifuge before opening to ensure complete recovery of vial contents.

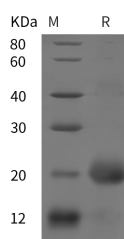
## Description

|                                    |  |
|------------------------------------|--|
| <b>Synonyms</b>                    | Kallikrein-6;Neurosin;Protease M;SP59;Serine Protease 18;Serine Protease 9;KLK6;PRSS18;PRSS9 |
| <b>Species</b>                     | Human  |
| <b>Expression Host</b>             | E.coli   |
| <b>Sequence</b>                    | Glu 81-Lys 244   |
| <b>Accession</b>                   | Q92876   |
| <b>Calculated Molecular Weight</b> | 25.8 kDa   |
| <b>Observed molecular weight</b>   | 20 kDa   |
| <b>Tag</b>                         | N-His  |

## Properties

|                       |   |
|-----------------------|---|
| <b>Purity</b>         | > 95 % as determined by reducing SDS-PAGE.  |
| <b>Endotoxin</b>      | Please contact us for more information.   |
| <b>Storage</b>        | Generally, lyophilized proteins are stable for up to 12 months when stored at -20 to -80°C. Reconstituted protein solution can be stored at 4-8°C for 2-7 days. Aliquots of reconstituted samples are stable at < -20°C for 3 months. |
| <b>Shipping</b>       | This product is provided as lyophilized powder which is shipped with ice packs.   |
| <b>Formulation</b>    | Lyophilized from sterile PBS, pH 7.4.<br>Normally 5 % - 8 % trehalose, mannitol and 0.01 % Tween80 are added as protectants before lyophilization.<br>Please refer to the specific buffer information in the printed manual.          |
| <b>Reconstitution</b> | Please refer to the printed manual for detailed information.  |

## Data



> 95 % as determined by reducing SDS-PAGE.

## Background

Tissue kallikreins are a family of extracellular serine proteases consisting of 15 members. The genes of this family aligned in tandem on chromosome 19q13.4 represent the largest contiguous group of proteases within the human genome. Tissue kallikreins have attracted great interest as potential biomarkers for various cancers, including prostate, ovarian, breast, testicular, and lung (2, 3). Human Kallikrein 6 (hKLK6) is a member of tissue kallikrein family observed in breast and brain tissues, colon carcinoma cells, and oligodendrocytes.

## For Research Use Only

A Reliable Research Partner in Life Science and Medicine

Toll-free: 1-888-852-8623

Web: [www.elabscience.com](http://www.elabscience.com)

Tel: 1-832-243-6086

Email: [techsupport@elabscience.com](mailto:techsupport@elabscience.com)

Fax: 1-832-243-6017