



# SZABO SCANDIC

Part of Europa Biosite

## Produktinformation



Forschungsprodukte & Biochemikalien



Zellkultur & Verbrauchsmaterial



Diagnostik & molekulare Diagnostik



Laborgeräte & Service

Weitere Information auf den folgenden Seiten!  
See the following pages for more information!



### Lieferung & Zahlungsart

siehe unsere [Liefer- und Versandbedingungen](#)

### Zuschläge

- Mindermengenzuschlag
- Trockeneiszuschlag
- Gefahrgutzuschlag
- Expressversand

### SZABO-SCANDIC HandelsgmbH

Quellenstraße 110, A-1100 Wien

T. +43(0)1 489 3961-0

F. +43(0)1 489 3961-7

[mail@szabo-scandic.com](mailto:mail@szabo-scandic.com)

[www.szabo-scandic.com](http://www.szabo-scandic.com)

[linkedin.com/company/szaboscandic](https://www.linkedin.com/company/szaboscandic) 

# Recombinant Human CREB3L4 protein (His tag)

Catalog Number:PDEH100312



**Note:** Centrifuge before opening to ensure complete recovery of vial contents.

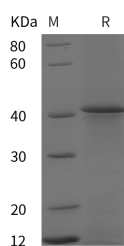
## Description

<b>Synonyms</b>	Cyclic AMP-responsive element-binding protein 3-like protein 4;CREB3L4;cAMP-responsive element-binding protein 3-like protein 4;Androgen-induced basic leucine zipper protein (AIBZIP);Attaching to CRE-like 1 (ATCE1);Cyclic AMP-responsive element-binding pr
<b>Species</b>	Human
<b>Expression Host</b>	E.coli
<b>Sequence</b>	Glu 14-Ser 295
<b>Accession</b>	Q8TEY5
<b>Calculated Molecular Weight</b>	32.2 kDa
<b>Observed molecular weight</b>	40 kDa
<b>Tag</b>	N-His & C-His

## Properties

<b>Purity</b>	> 95 % as determined by reducing SDS-PAGE.
<b>Endotoxin</b>	Please contact us for more information.
<b>Storage</b>	Generally, lyophilized proteins are stable for up to 12 months when stored at -20 to -80°C. Reconstituted protein solution can be stored at 4-8°C for 2-7 days. Aliquots of reconstituted samples are stable at < -20°C for 3 months.
<b>Shipping</b>	This product is provided as lyophilized powder which is shipped with ice packs.
<b>Formulation</b>	Lyophilized from sterile PBS, pH 7.4. Normally 5 % - 8 % trehalose, mannitol and 0.01 % Tween80 are added as protectants before lyophilization. Please refer to the specific buffer information in the printed manual.
<b>Reconstitution</b>	Please refer to the printed manual for detailed information.

## Data



> 95 % as determined by reducing SDS-PAGE.

## Background

The cyclic AMP responsive element-binding protein 3-like 4 (CREB3L4) is a transcription factor highly expressed in multiple human cancers. This study aimed to investigate the regulatory effects of CREB3L4 on GC progression and angiogenesis. CREB3L4 was overexpressed in GC tissues and cell lines, and was positively correlated with advanced tumor stage and poor survival in GC patients. The upregulation of CREB3L4 in GC cells increased cell viability, promoted cell proliferation, reduced apoptosis, enhanced cell migration and invasion, and induced the formation of tubule-

## For Research Use Only

A Reliable Research Partner in Life Science and Medicine

Toll-free: 1-888-852-8623

Web: [www.elabscience.com](http://www.elabscience.com)

Tel: 1-832-243-6086

Email: [techsupport@elabscience.com](mailto:techsupport@elabscience.com)

Fax: 1-832-243-6017

# Recombinant Human CREB3L4 protein (His tag)

Catalog Number:PDEH100312



like endothelial structures, whereas CREB3L4 knockdown impeded tumor cell growth, attenuated cell motility, and prevented human umbilical vein endothelial cells from forming tubule-like structures. In addition, mice inoculated with CREB3L4-deficient GC cells showed significantly suppressed tumor growth compared to the group harboring wild-type tumors.

---

## For Research Use Only

A Reliable Research Partner in Life Science and Medicine

Toll-free: 1-888-852-8623

Tel: 1-832-243-6086

Fax: 1-832-243-6017

Web: [www.elabscience.com](http://www.elabscience.com)

Email: [techsupport@elabscience.com](mailto:techsupport@elabscience.com)