



# SZABO SCANDIC

Part of Europa Biosite

## Produktinformation



Forschungsprodukte & Biochemikalien



Zellkultur & Verbrauchsmaterial



Diagnostik & molekulare Diagnostik



Laborgeräte & Service

Weitere Information auf den folgenden Seiten!  
See the following pages for more information!



### Lieferung & Zahlungsart

siehe unsere [Liefer- und Versandbedingungen](#)

### Zuschläge

- Mindermengenzuschlag
- Trockeneiszuschlag
- Gefahrgutzuschlag
- Expressversand

### SZABO-SCANDIC HandelsgmbH

Quellenstraße 110, A-1100 Wien

T. +43(0)1 489 3961-0

F. +43(0)1 489 3961-7

[mail@szabo-scandic.com](mailto:mail@szabo-scandic.com)

[www.szabo-scandic.com](http://www.szabo-scandic.com)

[linkedin.com/company/szaboscandic](https://www.linkedin.com/company/szaboscandic) 

# Recombinant Human SOCS2 protein (His tag)

Catalog Number:PDEH100325



**Note:** Centrifuge before opening to ensure complete recovery of vial contents.

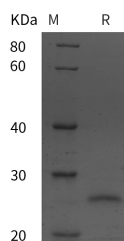
## Description

<b>Synonyms</b>	Suppressor of cytokine signaling 2;SOCS2;Cytokine-inducible SH2 protein 2;STAT-induced STAT inhibitor 2
<b>Species</b>	Human
<b>Expression Host</b>	E.coli
<b>Sequence</b>	Met 1-Val 198
<b>Accession</b>	O14508
<b>Calculated Molecular Weight</b>	21.7 kDa
<b>Observed molecular weight</b>	25 kDa
<b>Tag</b>	N-His & C-His

## Properties

<b>Purity</b>	> 95 % as determined by reducing SDS-PAGE.
<b>Endotoxin</b>	Please contact us for more information.
<b>Storage</b>	Generally, lyophilized proteins are stable for up to 12 months when stored at -20 to -80°C. Reconstituted protein solution can be stored at 4-8°C for 2-7 days. Aliquots of reconstituted samples are stable at < -20°C for 3 months.
<b>Shipping</b>	This product is provided as lyophilized powder which is shipped with ice packs.
<b>Formulation</b>	Lyophilized from sterile PBS, pH 7.4. Normally 5 % - 8 % trehalose, mannitol and 0.01 % Tween80 are added as protectants before lyophilization. Please refer to the specific buffer information in the printed manual.
<b>Reconstitution</b>	Please refer to the printed manual for detailed information.

## Data



> 95 % as determined by reducing SDS-PAGE.

## Background

SOCS-2 (Suppressor of cytokine signaling 2; also CIS-2 and SSI-2) is a 25 kDa member of the SOCS family of proteins. It is an SH2-domain containing cytoplasmic adaptor protein expressed by multiple cell types. It blocks receptor signaling by binding to phosphorylated tyrosines in the cytoplasmic domain of select receptors, including the receptors for leptin, IGF-I and GH. Human SOCS-2 is 198 amino acids (aa) in length and contains one SH2 domain (aa 48?156) and a SOCS box (aa 160?198) that mediates interaction with elongin B or C of the E3 ubiquitin ligase complex. There is one splice variant that shows an Arg-rich eight aa substitution for aa 31?39. Full-length SOCS-2 is 94% and 96% aa identical to mouse and porcine SOCS-2, respectively.

## For Research Use Only

A Reliable Research Partner in Life Science and Medicine

Toll-free: 1-888-852-8623

Web: [www.elabscience.com](http://www.elabscience.com)

Tel: 1-832-243-6086

Email: [techsupport@elabscience.com](mailto:techsupport@elabscience.com)

Fax: 1-832-243-6017