



SZABO SCANDIC

Part of Europa Biosite

Produktinformation



Forschungsprodukte & Biochemikalien



Zellkultur & Verbrauchsmaterial



Diagnostik & molekulare Diagnostik



Laborgeräte & Service

Weitere Information auf den folgenden Seiten!
See the following pages for more information!



Lieferung & Zahlungsart

siehe unsere [Liefer- und Versandbedingungen](#)

Zuschläge

- Mindermengenzuschlag
- Trockeneiszuschlag
- Gefahrgutzuschlag
- Expressversand

SZABO-SCANDIC HandelsgmbH

Quellenstraße 110, A-1100 Wien

T. +43(0)1 489 3961-0

F. +43(0)1 489 3961-7

mail@szabo-scandic.com

www.szabo-scandic.com

[linkedin.com/company/szaboscandic](https://www.linkedin.com/company/szaboscandic) 

Recombinant Human SNAP25 protein (His tag)

Catalog Number:PDEH100326



Note: Centrifuge before opening to ensure complete recovery of vial contents.

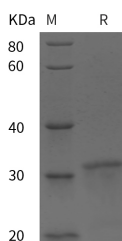
Description

Synonyms	Synaptosomal-associated protein 25;SNAP25;SNAP-25;Super protein;Synaptosomal-associated 25 kDa protein
Species	Human
Expression Host	E.coli
Sequence	Met 1-Gly 206
Accession	P60880-2
Calculated Molecular Weight	22.6 kDa
Observed molecular weight	31 kDa
Tag	N-His & C-His

Properties

Purity	> 95 % as determined by reducing SDS-PAGE.
Endotoxin	Please contact us for more information.
Storage	Generally, lyophilized proteins are stable for up to 12 months when stored at -20 to -80°C. Reconstituted protein solution can be stored at 4-8°C for 2-7 days. Aliquots of reconstituted samples are stable at < -20°C for 3 months.
Shipping	This product is provided as lyophilized powder which is shipped with ice packs.
Formulation	Lyophilized from sterile PBS, pH 7.4. Normally 5 % - 8 % trehalose, mannitol and 0.01 % Tween80 are added as protectants before lyophilization. Please refer to the specific buffer information in the printed manual.
Reconstitution	Please refer to the printed manual for detailed information.

Data



> 95 % as determined by reducing SDS-PAGE.

Background

Synaptosomal-associated protein 25, also known as Super protein, Synaptosomal-associated 25 kDa protein, SNAP25 and SNAP, is a cytoplasm and cell membrane protein which belongs to the SNAP-25 family. SNAP25 / SUP contains 2 t-SNARE coiled-coil homology domains. SNAP25 / SUP is a membrane bound protein anchored to the cytosolic face of membranes via palmitoyl side chains in the middle of the molecule. SNAP25 / SUP protein is a component of the SNARE complex, which is proposed to account for the specificity of membrane fusion and to directly execute fusion by forming a tight complex that brings the synaptic vesicle and plasma membranes together. SNAP25 / SUP is a Q-SNARE protein contributing two α -helices in the formation of the exocytotic fusion complex in neurons where it assembles with

For Research Use Only

A Reliable Research Partner in Life Science and Medicine

Toll-free: 1-888-852-8623

Web: www.elabscience.com

Tel: 1-832-243-6086

Email: techsupport@elabscience.com

Fax: 1-832-243-6017

Recombinant Human SNAP25 protein (His tag)

Catalog Number: PDEH100326



syntaxin-1 and synaptobrevin. SNAP25 / SUP is involved in the molecular regulation of neurotransmitter release. It may play an important role in the synaptic function of specific neuronal systems. SNAP25 / SUP associates with proteins involved in vesicle docking and membrane fusion. SNAP25 / SUP regulates plasma membrane recycling through its interaction with CENPF. SNAP25 / SUP inhibits P/Q- and L-type voltage-gated calcium channels located presynaptically and interacts with the synaptotagmin C2B domain in Ca²⁺-independent fashion. In glutamatergic synapses SNAP25 / SUP decreases the Ca²⁺ responsiveness, while it is naturally absent in GABAergic synapses.

For Research Use Only

A Reliable Research Partner in Life Science and Medicine

Toll-free: 1-888-852-8623

Tel: 1-832-243-6086

Fax: 1-832-243-6017

Web: www.elabscience.com

Email: techsupport@elabscience.com