



SZABO SCANDIC

Part of Europa Biosite

Produktinformation



Forschungsprodukte & Biochemikalien



Zellkultur & Verbrauchsmaterial



Diagnostik & molekulare Diagnostik



Laborgeräte & Service

Weitere Information auf den folgenden Seiten!
See the following pages for more information!



Lieferung & Zahlungsart

siehe unsere [Liefer- und Versandbedingungen](#)

Zuschläge

- Mindermengenzuschlag
- Trockeneiszuschlag
- Gefahrgutzuschlag
- Expressversand

SZABO-SCANDIC HandelsgmbH

Quellenstraße 110, A-1100 Wien

T. +43(0)1 489 3961-0

F. +43(0)1 489 3961-7

mail@szabo-scandic.com

www.szabo-scandic.com

[linkedin.com/company/szaboscandic](https://www.linkedin.com/company/szaboscandic) 

Recombinant Human PP2A-C α /PPP2CA protein (His tag)



Catalog Number:PDEH100357

Note: Centrifuge before opening to ensure complete recovery of vial contents.

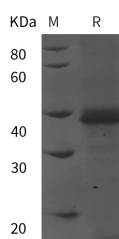
Description

Synonyms	Serine/threonine-protein phosphatase 2A catalytic subunit alpha isoform;PPP2CA; PP2A-alpha;Replication protein C (RP-C);PPP2CA
Species	Human
Expression Host	E.coli
Sequence	Met 1-Leu 309
Accession	P67775
Calculated Molecular Weight	39.3 kDa
Observed molecular weight	40 kDa
Tag	N-His & C-His

Properties

Purity	> 95 % as determined by reducing SDS-PAGE.
Endotoxin	Please contact us for more information.
Storage	Generally, lyophilized proteins are stable for up to 12 months when stored at -20 to -80°C. Reconstituted protein solution can be stored at 4-8°C for 2-7 days. Aliquots of reconstituted samples are stable at < -20°C for 3 months.
Shipping	This product is provided as lyophilized powder which is shipped with ice packs.
Formulation	Lyophilized from sterile PBS, pH 7.4. Normally 5 % - 8 % trehalose, mannitol and 0.01 % Tween80 are added as protectants before lyophilization. Please refer to the specific buffer information in the printed manual.
Reconstitution	Please refer to the printed manual for detailed information.

Data



> 95 % as determined by reducing SDS-PAGE.

Background

Protein Phosphatase 2A (PP2A) is an enzyme that removes phosphates covalently attached to serine and threonine residues in proteins. It contains three subunits; a catalytic subunit C (PP2Ac), an assembly/structural subunit A (PP2Aa), and a regulatory subunit B (PP2Ab). PP2A is a ubiquitous enzyme that plays a role in regulating many cellular activities varying from ion transport in erythrocytes to suppressing tumor growth. Binding of the SV40 small T antigen to the PP2A phosphatase complex is known to cause oncogenic transformation.

For Research Use Only

A Reliable Research Partner in Life Science and Medicine

Toll-free: 1-888-852-8623

Web: www.elabscience.com

Tel: 1-832-243-6086

Email: techsupport@elabscience.com

Fax: 1-832-243-6017