



# SZABO SCANDIC

Part of Europa Biosite

## Produktinformation



Forschungsprodukte & Biochemikalien



Zellkultur & Verbrauchsmaterial



Diagnostik & molekulare Diagnostik



Laborgeräte & Service

Weitere Information auf den folgenden Seiten!  
See the following pages for more information!



### Lieferung & Zahlungsart

siehe unsere [Liefer- und Versandbedingungen](#)

### Zuschläge

- Mindermengenzuschlag
- Trockeneiszuschlag
- Gefahrgutzuschlag
- Expressversand

### SZABO-SCANDIC HandelsgmbH

Quellenstraße 110, A-1100 Wien

T. +43(0)1 489 3961-0

F. +43(0)1 489 3961-7

[mail@szabo-scandic.com](mailto:mail@szabo-scandic.com)

[www.szabo-scandic.com](http://www.szabo-scandic.com)

[linkedin.com/company/szaboscandic](https://www.linkedin.com/company/szaboscandic) 

# Recombinant Human LEPR/CD295 protein (His tag)

Catalog Number:PDEH100368



**Note:** Centrifuge before opening to ensure complete recovery of vial contents.

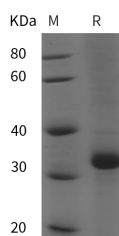
## Description

<b>Synonyms</b>	Leptin receptor;LEP-R;HuB219;OB receptor;OB-R;CD295;LEPR;DB;OBR
<b>Species</b>	Human
<b>Expression Host</b>	E.coli
<b>Sequence</b>	Phe 22-Val 333
<b>Accession</b>	P48357
<b>Calculated Molecular Weight</b>	34.2 kDa
<b>Observed molecular weight</b>	35 kDa
<b>Tag</b>	N-His

## Properties

<b>Purity</b>	> 95 % as determined by reducing SDS-PAGE.
<b>Endotoxin</b>	Please contact us for more information.
<b>Storage</b>	Generally, lyophilized proteins are stable for up to 12 months when stored at -20 to -80°C. Reconstituted protein solution can be stored at 4-8°C for 2-7 days. Aliquots of reconstituted samples are stable at < -20°C for 3 months.
<b>Shipping</b>	This product is provided as lyophilized powder which is shipped with ice packs.
<b>Formulation</b>	Lyophilized from sterile PBS, pH 7.4. Normally 5 % - 8 % trehalose, mannitol and 0.01 % Tween80 are added as protectants before lyophilization. Please refer to the specific buffer information in the printed manual.
<b>Reconstitution</b>	Please refer to the printed manual for detailed information.

## Data



> 95 % as determined by reducing SDS-PAGE.

## Background

Leptin Receptor or CD295 belongs to the gp130 family of cytokine receptors that are known to stimulate gene transcription via activation of cytosolic STAT proteins. This protein is a receptor for leptin (an adipocyte-specific hormone that regulates body weight), and is involved in the regulation of fat metabolism, as well as in a novel hematopoietic pathway that is required for normal lymphopoiesis. Leptin Receptor/CD295 is a transmembrane catalytic receptors found on NPY/AgRP and alpha-MSH/CART neurons in hypothalamic nuclei. Leptin receptors (Ob-Rs) are coded for by one human gene that produces six different isoforms; Ob-Ra - Ob-Rf. Ob-Rs exist as constitutive dimers at physiological expression levels. Only the Ob-Rb isoform can transduce intracellular signals and does so through activation of the JAK2/STAT3, PI 3-K and MAPK signaling cascades. Activation of Ob-Rs mediates transcriptional regulation of

## For Research Use Only

A Reliable Research Partner in Life Science and Medicine

Toll-free: 1-888-852-8623

Web: [www.elabscience.com](http://www.elabscience.com)

Tel: 1-832-243-6086

Email: [techsupport@elabscience.com](mailto:techsupport@elabscience.com)

Fax: 1-832-243-6017

# Recombinant Human LEPR/CD295 protein (His tag)

Catalog Number:PDEH100368



the hypothalamic melanocortin pathway and downregulates endocannabinoid expression. Leptin acts via leptin receptors. Leptin resistance has been proposed as a pathophysiological mechanism of obesity. In obese individuals, Ob-Ra (which is involved in active transport of leptin across the blood-brain barrier) expression is downregulated and the individual may be unresponsive to leptin signals. Ob-R antagonists are of great interest in the development of pharmacological treatments for obesity. Mutations in Leptin Receptor/CD295 have been associated with obesity and pituitary dysfunction.

---

## For Research Use Only

A Reliable Research Partner in Life Science and Medicine

Toll-free: 1-888-852-8623

Tel: 1-832-243-6086

Fax: 1-832-243-6017

Web: [www.elabscience.com](http://www.elabscience.com)

Email: [techsupport@elabscience.com](mailto:techsupport@elabscience.com)