



SZABO SCANDIC

Part of Europa Biosite

Produktinformation



Forschungsprodukte & Biochemikalien



Zellkultur & Verbrauchsmaterial



Diagnostik & molekulare Diagnostik



Laborgeräte & Service

Weitere Information auf den folgenden Seiten!
See the following pages for more information!



Lieferung & Zahlungsart

siehe unsere [Liefer- und Versandbedingungen](#)

Zuschläge

- Mindermengenzuschlag
- Trockeneiszuschlag
- Gefahrgutzuschlag
- Expressversand

SZABO-SCANDIC HandelsgmbH

Quellenstraße 110, A-1100 Wien

T. +43(0)1 489 3961-0

F. +43(0)1 489 3961-7

mail@szabo-scandic.com

www.szabo-scandic.com

[linkedin.com/company/szaboscandic](https://www.linkedin.com/company/szaboscandic) 

Recombinant Human MCM5 protein (His tag)

Catalog Number:PDEH100388



Note: Centrifuge before opening to ensure complete recovery of vial contents.

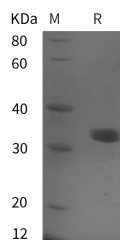
Description

Synonyms	DNA replication licensing factor MCM5;MCM5; CDC46
Species	Human
Expression Host	E.coli
Sequence	Met 1-Asp 200
Accession	P33992-1
Calculated Molecular Weight	21.9 kDa
Observed molecular weight	35 kDa
Tag	N-His & C-His

Properties

Purity	> 95 % as determined by reducing SDS-PAGE.
Endotoxin	Please contact us for more information.
Storage	Generally, lyophilized proteins are stable for up to 12 months when stored at -20 to -80°C. Reconstituted protein solution can be stored at 4-8°C for 2-7 days. Aliquots of reconstituted samples are stable at < -20°C for 3 months.
Shipping	This product is provided as lyophilized powder which is shipped with ice packs.
Formulation	Lyophilized from sterile PBS, pH 7.4. Normally 5 % - 8 % trehalose, mannitol and 0.01 % Tween80 are added as protectants before lyophilization. Please refer to the specific buffer information in the printed manual.
Reconstitution	Please refer to the printed manual for detailed information.

Data



> 95 % as determined by reducing SDS-PAGE.

Background

MCM5 (Mini Chromosome Maintenance protein-5) is involved in the control of DNA replication. MCM proteins have DNA dependent ATPase motifs in their central domain which is conserved from yeast to mammals. MCM proteins form a complex which exhibits ATPase and helicase activities. In G0 phase levels of MCM 2 and 5 are lower than that of MCM7 and 3 but increase as the cell enters G1/S phase of the cell cycle. It has been reported that immunocytochemical assessment of Mcm5 expression may be of value in improving the accuracy of cervical smear testing for the detection of malignancy.

For Research Use Only

A Reliable Research Partner in Life Science and Medicine

Toll-free: 1-888-852-8623

Web: www.elabscience.com

Tel: 1-832-243-6086

Email: techsupport@elabscience.com

Fax: 1-832-243-6017