



SZABO SCANDIC

Part of Europa Biosite

Produktinformation



Forschungsprodukte & Biochemikalien



Zellkultur & Verbrauchsmaterial



Diagnostik & molekulare Diagnostik



Laborgeräte & Service

Weitere Information auf den folgenden Seiten!
See the following pages for more information!



Lieferung & Zahlungsart

siehe unsere [Liefer- und Versandbedingungen](#)

Zuschläge

- Mindermengenzuschlag
- Trockeneiszuschlag
- Gefahrgutzuschlag
- Expressversand

SZABO-SCANDIC HandelsgmbH

Quellenstraße 110, A-1100 Wien

T. +43(0)1 489 3961-0

F. +43(0)1 489 3961-7

mail@szabo-scandic.com

www.szabo-scandic.com

[linkedin.com/company/szaboscandic](https://www.linkedin.com/company/szaboscandic) 

Recombinant Human MAP4K2 protein (His tag)

Catalog Number:PDEH100398



Note: Centrifuge before opening to ensure complete recovery of vial contents.

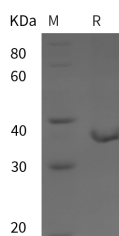
Description

Synonyms	BL44;GCK;MAP4K2;RAB8IP
Species	Human
Expression Host	E.coli
Sequence	Ile 501-Tyr 812
Accession	Q12851-2
Calculated Molecular Weight	34.2 kDa
Observed molecular weight	35 kDa
Tag	N-His & C-His

Properties

Purity	> 95 % as determined by reducing SDS-PAGE.
Endotoxin	Please contact us for more information.
Storage	Generally, lyophilized proteins are stable for up to 12 months when stored at -20 to -80°C. Reconstituted protein solution can be stored at 4-8°C for 2-7 days. Aliquots of reconstituted samples are stable at < -20°C for 3 months.
Shipping	This product is provided as lyophilized powder which is shipped with ice packs.
Formulation	Lyophilized from sterile PBS, pH 7.4. Normally 5 % - 8 % trehalose, mannitol and 0.01 % Tween80 are added as protectants before lyophilization. Please refer to the specific buffer information in the printed manual.
Reconstitution	Please refer to the printed manual for detailed information.

Data



> 95 % as determined by reducing SDS-PAGE.

Background

Mitogen-activated protein kinase kinase kinase kinase 2, also known as B lymphocyte serine/threonine-protein kinase, Germinal center kinase, MAPK/ERK kinase kinase kinase 2, MEK kinase kinase 2, Rab8-interacting protein and MAP4K2, is a cytoplasm and peripheral membrane protein which belongs to the protein kinase superfamily, STE Ser/Thr protein kinase family and STE20 subfamily. MAP4K2 contains one CNH domain and one protein kinase domain. Although this kinase is found in many tissues, its expression in lymphoid follicles is restricted to the cells of germinal centre, where it may participate in B-cell differentiation. MAP4K2 can be activated by TNF-alpha, and has been shown to specifically activate MAP kinases. It is also found to interact with TNF receptor-associated factor 2 (TRAF2), which is involved in the activation of MAP3K1 / MEKK1. MAP4K2 enhances MAP3K1 oligomerization, which may relieve

For Research Use Only

A Reliable Research Partner in Life Science and Medicine

Toll-free: 1-888-852-8623

Web: www.elabscience.com

Tel: 1-832-243-6086

Email: techsupport@elabscience.com

Fax: 1-832-243-6017

Recombinant Human MAP4K2 protein (His tag)

Catalog Number: PDEH100398



amino-terminal mediated MAP3K1 autoinhibition and lead to activation following autophosphorylation. It may also play a role in the regulation of vesicle targeting or fusion.

For Research Use Only

A Reliable Research Partner in Life Science and Medicine

Toll-free: 1-888-852-8623

Tel: 1-832-243-6086

Fax: 1-832-243-6017

Web: www.elabscience.com

Email: techsupport@elabscience.com