



SZABO SCANDIC

Part of Europa Biosite

Produktinformation



Forschungsprodukte & Biochemikalien



Zellkultur & Verbrauchsmaterial



Diagnostik & molekulare Diagnostik



Laborgeräte & Service

Weitere Information auf den folgenden Seiten!
See the following pages for more information!



Lieferung & Zahlungsart

siehe unsere [Liefer- und Versandbedingungen](#)

Zuschläge

- Mindermengenzuschlag
- Trockeneiszuschlag
- Gefahrgutzuschlag
- Expressversand

SZABO-SCANDIC HandelsgmbH

Quellenstraße 110, A-1100 Wien

T. +43(0)1 489 3961-0

F. +43(0)1 489 3961-7

mail@szabo-scandic.com

www.szabo-scandic.com

[linkedin.com/company/szaboscandic](https://www.linkedin.com/company/szaboscandic) 

Recombinant Human COMP protein (GST,His tag)

Catalog Number:PDEH100417



Note: Centrifuge before opening to ensure complete recovery of vial contents.

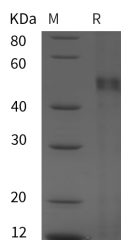
Description

Synonyms	EDM1;EPD1;MED;PSACH;THBS5
Species	Human
Expression Host	E.coli
Sequence	Gly 22-His 240
Accession	P49747
Calculated Molecular Weight	49.0 kDa
Observed molecular weight	50 kDa
Tag	N-GST & C-His

Properties

Purity	> 95 % as determined by reducing SDS-PAGE.
Endotoxin	Please contact us for more information.
Storage	Generally, lyophilized proteins are stable for up to 12 months when stored at -20 to -80°C. Reconstituted protein solution can be stored at 4-8°C for 2-7 days. Aliquots of reconstituted samples are stable at < -20°C for 3 months.
Shipping	This product is provided as lyophilized powder which is shipped with ice packs.
Formulation	Lyophilized from sterile PBS, pH 7.4. Normally 5 % - 8 % trehalose, mannitol and 0.01 % Tween80 are added as protectants before lyophilization. Please refer to the specific buffer information in the printed manual.
Reconstitution	Please refer to the printed manual for detailed information.

Data



> 95 % as determined by reducing SDS-PAGE.

Background

Cartilage Oligomeric Matrix Protein (COMP), also referred to as Thrombospondin-5, is a non-collagenous extracellular matrix (ECM) protein and belongs to the subgroup B of the thrombospondin protein family. This protein is expressed primarily in cartilage, ligament, and tendon, and binds to other ECM proteins such as collagen I, II and IX with high affinities depending on the divalent cations Zn²⁺ or Ni²⁺. COMP is a secreted glycoprotein that is important for growth plate organization and function. It is suggested to play a role in cell growth and development, and recent studies have revealed the possible mechanism that it protects cells against death by elevating members of the IAP (inhibitor of apoptosis protein) family of survival proteins. Mutations in COMP cause two skeletal dysplasias, pseudoachondroplasia (PSACH) and multiple epiphyseal dysplasia (EDM1), and up-regulated expression of COMP are observed in rheumatoid

For Research Use Only

A Reliable Research Partner in Life Science and Medicine

Toll-free: 1-888-852-8623

Tel: 1-832-243-6086

Fax: 1-832-243-6017

Web: www.elabscience.com

Email: techsupport@elabscience.com

Recombinant Human COMP protein (GST,His tag)

Catalog Number:PDEH100417



arthritis and certain carcinomas.

For Research Use Only

A Reliable Research Partner in Life Science and Medicine

Toll-free: 1-888-852-8623

Tel: 1-832-243-6086

Fax: 1-832-243-6017

Web: www.elabscience.com

Email: techsupport@elabscience.com