



SZABO SCANDIC

Part of Europa Biosite

Produktinformation



Forschungsprodukte & Biochemikalien



Zellkultur & Verbrauchsmaterial



Diagnostik & molekulare Diagnostik



Laborgeräte & Service

Weitere Information auf den folgenden Seiten!
See the following pages for more information!



Lieferung & Zahlungsart

siehe unsere [Liefer- und Versandbedingungen](#)

Zuschläge

- Mindermengenzuschlag
- Trockeneiszuschlag
- Gefahrgutzuschlag
- Expressversand

SZABO-SCANDIC HandelsgmbH

Quellenstraße 110, A-1100 Wien

T. +43(0)1 489 3961-0

F. +43(0)1 489 3961-7

mail@szabo-scandic.com

www.szabo-scandic.com

[linkedin.com/company/szaboscandic](https://www.linkedin.com/company/szaboscandic) 

Recombinant Mouse α -Synuclein/SNCA Protein (His Tag)



Catalog Number:PDEM100005

Note: Centrifuge before opening to ensure complete recovery of vial contents.

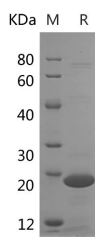
Description

Synonyms	Alpha-synuclein;Non-A beta component of AD amyloid;Non-A4 component of amyloid precursor;NACP;Snca
Species	Mouse
Expression Host	E.coli
Sequence	Met1-Ala140
Accession	O55042
Calculated Molecular Weight	15.9 kDa
Observed molecular weight	18 kDa
Tag	N-His

Properties

Purity	> 95 % as determined by reducing SDS-PAGE.
Endotoxin	< 1.0 EU per μ g of the protein as determined by the LAL method.
Storage	Generally, lyophilized proteins are stable for up to 12 months when stored at -20 to -80°C. Reconstituted protein solution can be stored at 4-8°C for 2-7 days. Aliquots of reconstituted samples are stable at < -20°C for 3 months.
Shipping	This product is provided as lyophilized powder which is shipped with ice packs.
Formulation	Lyophilized from a 0.2 μ m filtered solution of 20mM PB, 150mM NaCl, pH 7.4. Normally 5 % - 8 % trehalose, mannitol and 0.01% Tween80 are added as protectants before lyophilization. Please refer to the specific buffer information in the printed manual
Reconstitution	Please refer to the printed manual for detailed information.

Data



> 95 % as determined by reducing SDS-PAGE.

Background

Alpha-synuclein (Snca) belongs to a family of proteins including α -, β -, and γ -synucleins. Alpha-synuclein has been found to be implicated in the pathophysiology of many neurodegenerative diseases, including Parkinson's disease (PD) and Alzheimer's disease. Many neurodegenerative diseases has shown that alpha-synuclein accumulates in dystrophic neurites and in Lewy bodies. The function of alpha-synuclein is closely correlated with its three-dimensional structure, especially for proteins important in the pathogenesis of neurodegenerative diseases. Alpha-synuclein is a dynamic molecule whose secondary structure depends on the environment. For example, it has an unfolded random coil structure in aqueous solution, forms α -helical structure upon binding to acidic phospholipid vesicles, and forms insoluble fibrils with a high β -

For Research Use Only

A Reliable Research Partner in Life Science and Medicine

Toll-free: 1-888-852-8623

Web: www.elabscience.com

Tel: 1-832-243-6086

Email: techsupport@elabscience.com

Fax: 1-832-243-6017

Recombinant Mouse α -Synuclein/SNCA Protein (His Tag)



Catalog Number: PDEM100005

sheet content that resemble the filaments found in Lewy bodies. Also, alpha-synuclein was known to associate with 14-3-3 proteins including protein kinase C, BAD, and extracellular regulated kinase, and overexpression of alpha-synuclein could contribute to cell death in neurodegenerative diseases.

For Research Use Only

A Reliable Research Partner in Life Science and Medicine

Toll-free: 1-888-852-8623

Tel: 1-832-243-6086

Fax: 1-832-243-6017

Web: www.elabscience.com

Email: techsupport@elabscience.com