



SZABO SCANDIC

Part of Europa Biosite

Produktinformation



Forschungsprodukte & Biochemikalien



Zellkultur & Verbrauchsmaterial



Diagnostik & molekulare Diagnostik



Laborgeräte & Service

Weitere Information auf den folgenden Seiten!
See the following pages for more information!



Lieferung & Zahlungsart

siehe unsere [Liefer- und Versandbedingungen](#)

Zuschläge

- Mindermengenzuschlag
- Trockeneiszuschlag
- Gefahrgutzuschlag
- Expressversand

SZABO-SCANDIC HandelsgmbH

Quellenstraße 110, A-1100 Wien

T. +43(0)1 489 3961-0

F. +43(0)1 489 3961-7

mail@szabo-scandic.com

www.szabo-scandic.com

[linkedin.com/company/szaboscandic](https://www.linkedin.com/company/szaboscandic) 

Recombinant Mouse EpCAM Protein (His Tag)

Catalog Number:PDEM100009



Note: Centrifuge before opening to ensure complete recovery of vial contents.

Description

Synonyms	17 1A;323/A3;Adenocarcinoma associated antigen;Adenocarcinoma-associated antigen;Antigen identified by monoclonal AUA1;AUA1;CD326;CD326 antigen;Cell surface glycoprotein Trop 1;Cell surface glycoprotein Trop 2;Cell surface glycoprotein Trop-1;CO 17A;CO17 1A;CO17A;DIAR5;EGP 2;EGP;EGP2;EGP314;EGP40;Ep CAM;Ep-CAM;EPCAM;EPCAM;EpCAM1;Epithelial cell adhesion molecule;Epithelial Cell Adhesion Molecule Intracellular Domain (EpCAM-ICD);Epithelial cell surface antigen;Epithelial cellular adhesion molecule;Epithelial glycoprotein 1;Epithelial glycoprotein 314;Epithelial glycoprotein;ESA;GA733 1;GA733 2;GA733-2;gastrointestinal tumor-associated antigen 2;35-KD glycoprotein;gp4;hEGP 2;hEGP314;HNPC8;Human epithelial glycoprotein 2;KS 1/4 antigen;KS1/4;KSA;Ly74;Lymphocyte antigen 74;M1S 1;M1S2;M4S1;Major gastrointestinal tumor associated protein GA733 2;Major gastrointestinal tumor-associated protein GA733-2;mEGP314;Membrane component chromosome 4 surface marker (35kD glycoprotein);Membrane component;chromosome 4;surface marker 1;Membrane component;chromosome 4;surface marker;MIC18;MK 1;Protein 289A;TACD1;TACSTD1;TROP1;Tumor associated calcium signal transducer 1;Tumor associated calcium signal transducer 2 precursor;Tumor-associated calcium signal transducer 1
Species	Mouse
Expression Host	E.coli
Sequence	Glu24-Thr266
Accession	Q99JW5-1
Calculated Molecular Weight	27.7 kDa
Observed molecular weight	30 kDa
Tag	N-His

Properties

Purity	> 90 % as determined by reducing SDS-PAGE.
Endotoxin	Please contact us for more information.
Storage	Generally, lyophilized proteins are stable for up to 12 months when stored at -20 to -80°C. Reconstituted protein solution can be stored at 4-8°C for 2-7 days. Aliquots of reconstituted samples are stable at < -20°C for 3 months.
Shipping	This product is provided as lyophilized powder which is shipped with ice packs.
Formulation	Lyophilized from sterile PBS, pH 7.4. Normally 5 % - 8 % trehalose, mannitol and 0.01% Tween80 are added as protectants before lyophilization. Please refer to the specific buffer information in the printed manual.
Reconstitution	Please refer to the printed manual for detailed information.

Data

For Research Use Only

A Reliable Research Partner in Life Science and Medicine

Toll-free: 1-888-852-8623

Web: www.elabscience.com

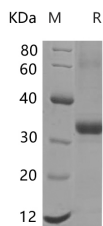
Tel: 1-832-243-6086

Email: techsupport@elabscience.com

Fax: 1-832-243-6017

Recombinant Mouse EpCAM Protein (His Tag)

Catalog Number:PDEM100009



> 90 % as determined by reducing SDS-PAGE.

Background

Epithelial cell adhesion molecule (EpCAM,CD326) is a type I transmembrane glycoprotein that functions as a homophilic,epithelial-specific intercellular cell-adhesion molecule. In addition to cell adhesion,EpCAM is also involved in cellular signaling,cell migration,proliferation,and differentiation. EpCAM is highly expressed on most carcinomas and therefore of potential use as a diagnostic and prognostic marker for a variety of carcinomas,and has become a therapeutic target.

For Research Use Only

A Reliable Research Partner in Life Science and Medicine

Toll-free: 1-888-852-8623

Web: www.elabscience.com

Tel: 1-832-243-6086

Email: techsupport@elabscience.com

Fax: 1-832-243-6017