



# SZABO SCANDIC

Part of Europa Biosite

## Produktinformation



Forschungsprodukte & Biochemikalien



Zellkultur & Verbrauchsmaterial



Diagnostik & molekulare Diagnostik



Laborgeräte & Service

Weitere Information auf den folgenden Seiten!  
See the following pages for more information!



### Lieferung & Zahlungsart

siehe unsere [Liefer- und Versandbedingungen](#)

### Zuschläge

- Mindermengenzuschlag
- Trockeneiszuschlag
- Gefahrgutzuschlag
- Expressversand

### SZABO-SCANDIC HandelsgmbH

Quellenstraße 110, A-1100 Wien

T. +43(0)1 489 3961-0

F. +43(0)1 489 3961-7

[mail@szabo-scandic.com](mailto:mail@szabo-scandic.com)

[www.szabo-scandic.com](http://www.szabo-scandic.com)

[linkedin.com/company/szaboscandic](https://www.linkedin.com/company/szaboscandic) 

# Recombinant Mouse Component C3a protein (TRX,His tag)

**DIA • AN**<sup>®</sup>  
by Elabscience

Catalog Number: PDEM100035

**Note:** Centrifuge before opening to ensure complete recovery of vial contents.

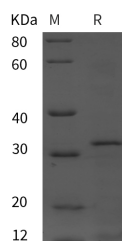
## Description

<b>Synonyms</b>	Acylation stimulating protein; AHUS5; ARMD9; ASP; C3; Complement component C; Complement C3
<b>Species</b>	Mouse
<b>Expression Host</b>	E.coli
<b>Sequence</b>	Ser 671-Arg 748
<b>Accession</b>	P01027
<b>Calculated Molecular Weight</b>	28.5 kDa
<b>Observed molecular weight</b>	32 kDa
<b>Tag</b>	N-Trx-His

## Properties

<b>Purity</b>	> 95 % as determined by reducing SDS-PAGE.
<b>Endotoxin</b>	Please contact us for more information.
<b>Storage</b>	Generally, lyophilized proteins are stable for up to 12 months when stored at -20 to -80°C. Reconstituted protein solution can be stored at 4-8°C for 2-7 days. Aliquots of reconstituted samples are stable at < -20°C for 3 months.
<b>Shipping</b>	This product is provided as lyophilized powder which is shipped with ice packs.
<b>Formulation</b>	Lyophilized from sterile PBS, pH 7.4. Normally 5 % - 8 % trehalose, mannitol and 0.01 % Tween80 are added as protectants before lyophilization. Please refer to the specific buffer information in the printed manual.
<b>Reconstitution</b>	Please refer to the printed manual for detailed information.

## Data



> 95 % as determined by reducing SDS-PAGE.

## Background

Complement is defined as key part of innate immunity and as the first line of defense in the fight against invading pathogens. Complement 3 (C3) is the most abundant component of the complement cascade and the convergent point for all three major complement activation pathways: namely classical, alternative and mannose-binding lectin pathways. Complement activation leads to the formation of the C3 convertase, which cleaves C3 into the key effector molecules, C3a (anaphylatoxin) and C3b (opsonin) which then drive microbe removal. By binding to C3a receptor (C3aR), C3a exhibits potent anaphylatoxin activity, including increased vascular permeability, triggering degranulation of mast cells, inflammation, and activating leukocytes.

## For Research Use Only

A Reliable Research Partner in Life Science and Medicine

Toll-free: 1-888-852-8623

Tel: 1-832-243-6086

Fax: 1-832-243-6017

Web: [www.elabscience.com](http://www.elabscience.com)

Email: [techsupport@elabscience.com](mailto:techsupport@elabscience.com)