



# SZABO SCANDIC

Part of Europa Biosite

## Produktinformation



Forschungsprodukte & Biochemikalien



Zellkultur & Verbrauchsmaterial



Diagnostik & molekulare Diagnostik



Laborgeräte & Service

Weitere Information auf den folgenden Seiten!  
See the following pages for more information!



### Lieferung & Zahlungsart

siehe unsere [Liefer- und Versandbedingungen](#)

### Zuschläge

- Mindermengenzuschlag
- Trockeneiszuschlag
- Gefahrgutzuschlag
- Expressversand

### SZABO-SCANDIC HandelsgmbH

Quellenstraße 110, A-1100 Wien

T. +43(0)1 489 3961-0

F. +43(0)1 489 3961-7

[mail@szabo-scandic.com](mailto:mail@szabo-scandic.com)

[www.szabo-scandic.com](http://www.szabo-scandic.com)

[linkedin.com/company/szaboscandic](https://www.linkedin.com/company/szaboscandic) 

# Recombinant Mouse CHI3L1/YKL40 protein (His tag)



Catalog Number: PDEM100038

**Note:** Centrifuge before opening to ensure complete recovery of vial contents.

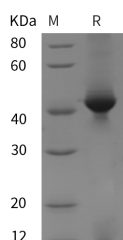
## Description

<b>Synonyms</b>	AW208766;Brp39;Gp39;YKL-40;YKL40;YYL-40;hCGP-39
<b>Species</b>	Mouse
<b>Expression Host</b>	E.coli
<b>Sequence</b>	Tyr 30-Ala 389
<b>Accession</b>	Q61362
<b>Calculated Molecular Weight</b>	39.5 kDa
<b>Observed molecular weight</b>	42 kDa
<b>Tag</b>	N-His

## Properties

<b>Purity</b>	> 95 % as determined by reducing SDS-PAGE.
<b>Endotoxin</b>	Please contact us for more information.
<b>Storage</b>	Generally, lyophilized proteins are stable for up to 12 months when stored at -20 to -80°C. Reconstituted protein solution can be stored at 4-8°C for 2-7 days. Aliquots of reconstituted samples are stable at < -20°C for 3 months.
<b>Shipping</b>	This product is provided as lyophilized powder which is shipped with ice packs.
<b>Formulation</b>	Lyophilized from sterile PBS, pH 7.4. Normally 5 % - 8 % trehalose, mannitol and 0.01 % Tween80 are added as protectants before lyophilization. Please refer to the specific buffer information in the printed manual.
<b>Reconstitution</b>	Please refer to the printed manual for detailed information.

## Data



> 95 % as determined by reducing SDS-PAGE.

## Background

Chitinase-3-like protein 1 (CHI3L1) is a secreted heparin-binding glycoprotein whose expression is associated with vascular smooth muscle cell migration. CHI3L1 is expressed at high levels in postconfluent nodular VSMC cultures and at low levels in subconfluent proliferating cultures. CHI3L1 is a tissue-restricted, chitin-binding lectin and member of glycosyl hydrolase family 18. In contrast to many other monocyto / macrophage markers, its expression is absent in monocytes and strong induced during late stages of human macrophage differentiation. Elevated levels of CHI3L1 are associated with disorders exhibiting increased connective tissue turnover, such as rheum atoid, arthritis, osteoarthritis, scleroderma, and cirrhosis of liver, but is produced in cartilage from old donors or patiens with osteoarthritis. CHI3L1 is abnormally expressed in the hippocampus of subjects with schizophrenia and may be involved in the cellular response to

## For Research Use Only

A Reliable Research Partner in Life Science and Medicine

Toll-free: 1-888-852-8623

Web: [www.elabscience.com](http://www.elabscience.com)

Tel: 1-832-243-6086

Email: [techsupport@elabscience.com](mailto:techsupport@elabscience.com)

Fax: 1-832-243-6017

# Recombinant Mouse CHI3L1/YKL40 protein (His tag)

Catalog Number: PDEM100038



various environmental events that are reported to increase the risk of schizophrenia.

---

## For Research Use Only

A Reliable Research Partner in Life Science and Medicine

Toll-free: 1-888-852-8623

Tel: 1-832-243-6086

Fax: 1-832-243-6017

Web: [www.elabscience.com](http://www.elabscience.com)

Email: [techsupport@elabscience.com](mailto:techsupport@elabscience.com)