



# SZABO SCANDIC

Part of Europa Biosite

## Produktinformation



Forschungsprodukte & Biochemikalien



Zellkultur & Verbrauchsmaterial



Diagnostik & molekulare Diagnostik



Laborgeräte & Service

Weitere Information auf den folgenden Seiten!  
See the following pages for more information!



### Lieferung & Zahlungsart

siehe unsere [Liefer- und Versandbedingungen](#)

### Zuschläge

- Mindermengenzuschlag
- Trockeneiszuschlag
- Gefahrgutzuschlag
- Expressversand

### SZABO-SCANDIC HandelsgmbH

Quellenstraße 110, A-1100 Wien

T. +43(0)1 489 3961-0

F. +43(0)1 489 3961-7

[mail@szabo-scandic.com](mailto:mail@szabo-scandic.com)

[www.szabo-scandic.com](http://www.szabo-scandic.com)

[linkedin.com/company/szaboscandic](https://www.linkedin.com/company/szaboscandic) 

# Recombinant Mouse Ceruloplasmin/CP protein (His tag)



Catalog Number: PDEM100040

**Note:** Centrifuge before opening to ensure complete recovery of vial contents.

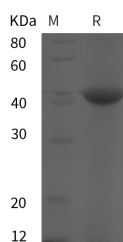
## Description

|                                    |                                    |
|------------------------------------|------------------------------------|
| <b>Synonyms</b>                    | CERU_MOUSE;EC:1.16.3.1;Ferroxidase |
| <b>Species</b>                     | Mouse                              |
| <b>Expression Host</b>             | E.coli                             |
| <b>Sequence</b>                    | Tyr729-Gly1061                     |
| <b>Accession</b>                   | Q61147                             |
| <b>Calculated Molecular Weight</b> | 36.5 kDa                           |
| <b>Observed molecular weight</b>   | 40 kDa                             |
| <b>Tag</b>                         | N-His                              |

## Properties

|                       |   |
|-----------------------|---|
| <b>Purity</b>         | > 95 % as determined by reducing SDS-PAGE.  |
| <b>Endotoxin</b>      | Please contact us for more information.   |
| <b>Storage</b>        | Generally, lyophilized proteins are stable for up to 12 months when stored at -20 to -80°C. Reconstituted protein solution can be stored at 4-8°C for 2-7 days. Aliquots of reconstituted samples are stable at < -20°C for 3 months. |
| <b>Shipping</b>       | This product is provided as lyophilized powder which is shipped with ice packs.   |
| <b>Formulation</b>    | Lyophilized from sterile PBS, pH 7.4.<br>Normally 5 % - 8 % trehalose, mannitol and 0.01 % Tween80 are added as protectants before lyophilization.<br>Please refer to the specific buffer information in the printed manual.          |
| <b>Reconstitution</b> | Please refer to the printed manual for detailed information.  |

## Data



> 95 % as determined by reducing SDS-PAGE.

## Background

Ceruloplasmin is a blue, copper-binding (6-7 atoms per molecule) glycoprotein. It has ferroxidase activity oxidizing Fe<sup>2+</sup> to Fe<sup>3+</sup> without releasing radical oxygen species. It is involved in iron transport across the cell membrane. Provides Cu<sup>2+</sup> ions for the ascorbate-mediated deaminase degradation of the heparan sulfate chains of GPC1. May also play a role in fetal lung development or pulmonary antioxidant defense. Defects in CP are the cause of aceruloplasminemia (ACERULOP) [MIM:604290]. It is an autosomal recessive disorder of iron metabolism characterized by iron accumulation in the brain as well as visceral organs. Clinical features consist of the triad of retinal degeneration, diabetes mellitus and neurological disturbances. Note=Ceruloplasmin levels are decreased in Wilson disease, in which copper cannot be incorporated into ceruloplasmin in liver because of defects in the copper-transporting ATPase 2.

## For Research Use Only

A Reliable Research Partner in Life Science and Medicine

Toll-free: 1-888-852-8623

Web: [www.elabscience.com](http://www.elabscience.com)

Tel: 1-832-243-6086

Email: [techsupport@elabscience.com](mailto:techsupport@elabscience.com)

Fax: 1-832-243-6017