



SZABO SCANDIC

Part of Europa Biosite

Produktinformation



Forschungsprodukte & Biochemikalien



Zellkultur & Verbrauchsmaterial



Diagnostik & molekulare Diagnostik



Laborgeräte & Service

Weitere Information auf den folgenden Seiten!
See the following pages for more information!



Lieferung & Zahlungsart

siehe unsere [Liefer- und Versandbedingungen](#)

Zuschläge

- Mindermengenzuschlag
- Trockeneiszuschlag
- Gefahrgutzuschlag
- Expressversand

SZABO-SCANDIC HandelsgmbH

Quellenstraße 110, A-1100 Wien

T. +43(0)1 489 3961-0

F. +43(0)1 489 3961-7

mail@szabo-scandic.com

www.szabo-scandic.com

[linkedin.com/company/szaboscandic](https://www.linkedin.com/company/szaboscandic) 

Recombinant Mouse ACTH protein (His tag)

Catalog Number:PDEM100051



Note: Centrifuge before opening to ensure complete recovery of vial contents.

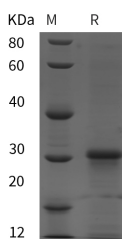
Description

Synonyms	ACTH;Adrenocorticotropic hormone;Adrenocorticotropin;Pomc;Pomc1;POC;POMC;Pomc-1;Pomc1;Pmc2
Species	Mouse
Expression Host	E.coli
Sequence	Trp 27-Gln 235
Accession	P01193
Calculated Molecular Weight	22.9 kDa
Observed molecular weight	30 kDa
Tag	N-His

Properties

Purity	> 95 % as determined by reducing SDS-PAGE.
Endotoxin	Please contact us for more information.
Storage	Generally, lyophilized proteins are stable for up to 12 months when stored at -20 to -80°C. Reconstituted protein solution can be stored at 4-8°C for 2-7 days. Aliquots of reconstituted samples are stable at < -20°C for 3 months.
Shipping	This product is provided as lyophilized powder which is shipped with ice packs.
Formulation	Lyophilized from sterile PBS, pH 7.4. Normally 5 % - 8 % trehalose, mannitol and 0.01 % Tween80 are added as protectants before lyophilization. Please refer to the specific buffer information in the printed manual.
Reconstitution	Please refer to the printed manual for detailed information.

Data



> 95 % as determined by reducing SDS-PAGE.

Background

Adrenocorticotropic hormone (ACTH)/corticotropin is a 39 amino acid peptide generated by cleavage of the POMC, a preprotein which also can also be cleaved to produce MSH, Beta-endorphin and Met-enkephalin, depending on tissue expression and context. ACTH is a ligand for the ACTH receptor, also known as melanocortin receptor 2. ACTH is secreted by the anterior pituitary gland upon stimulation by corticotropin-releasing hormone (CRH) which is secreted by the hypothalamus. The principal effect of ACTH is production of cortisol by the adrenal gland but it also mediates bone formation and osteoblast survival. ACTH has been shown to induce insulin resistance in adipocytes and promote pro-inflammatory adipokine secretion.

For Research Use Only

A Reliable Research Partner in Life Science and Medicine

Toll-free: 1-888-852-8623

Web: www.elabscience.com

Tel: 1-832-243-6086

Email: techsupport@elabscience.com

Fax: 1-832-243-6017