



# SZABO SCANDIC

Part of Europa Biosite

## Produktinformation



Forschungsprodukte & Biochemikalien



Zellkultur & Verbrauchsmaterial



Diagnostik & molekulare Diagnostik



Laborgeräte & Service

Weitere Information auf den folgenden Seiten!  
See the following pages for more information!



### Lieferung & Zahlungsart

siehe unsere [Liefer- und Versandbedingungen](#)

### Zuschläge

- Mindermengenzuschlag
- Trockeneiszuschlag
- Gefahrgutzuschlag
- Expressversand

### SZABO-SCANDIC HandelsgmbH

Quellenstraße 110, A-1100 Wien

T. +43(0)1 489 3961-0

F. +43(0)1 489 3961-7

[mail@szabo-scandic.com](mailto:mail@szabo-scandic.com)

[www.szabo-scandic.com](http://www.szabo-scandic.com)

[linkedin.com/company/szaboscandic](https://www.linkedin.com/company/szaboscandic) 

# Recombinant Mouse PSMA / FOLH1 protein (His tag)



Catalog Number:PDEM100095

**Note:** Centrifuge before opening to ensure complete recovery of vial contents.

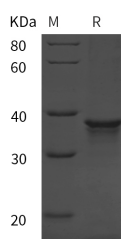
## Description

<b>Synonyms</b>	Glutamate carboxypeptidase 2;Folh1;Folate hydrolase 1;Folylpoly-gamma-glutamate carboxypeptidase (FGCP);Glutamate carboxypeptidase II (GCPII);Membrane glutamate carboxypeptidase (mGCP);N-acetylated-alpha-linked acidic dipeptidase I (NAALADase I)
<b>Species</b>	Mouse
<b>Expression Host</b>	E.coli
<b>Sequence</b>	Lys 45-Phe 335
<b>Accession</b>	O35409
<b>Calculated Molecular Weight</b>	31.9 kDa
<b>Observed molecular weight</b>	38 kDa
<b>Tag</b>	N-His

## Properties

<b>Purity</b>	> 95 % as determined by reducing SDS-PAGE.
<b>Endotoxin</b>	Please contact us for more information.
<b>Storage</b>	Generally, lyophilized proteins are stable for up to 12 months when stored at -20 to -80°C. Reconstituted protein solution can be stored at 4-8°C for 2-7 days. Aliquots of reconstituted samples are stable at < -20°C for 3 months.
<b>Shipping</b>	This product is provided as lyophilized powder which is shipped with ice packs.
<b>Formulation</b>	Lyophilized from sterile PBS, pH 7.4. Normally 5 % - 8 % trehalose, mannitol and 0.01 % Tween80 are added as protectants before lyophilization. Please refer to the specific buffer information in the printed manual.
<b>Reconstitution</b>	Please refer to the printed manual for detailed information.

## Data



> 95 % as determined by reducing SDS-PAGE.

## Background

Glutamate carboxypeptidase 2, also known as Glutamate carboxypeptidase II, Membrane glutamate carboxypeptidase, Prostate-specific membrane antigen, GCPII, PSMA, FOLH1, and NAALAD1, is a single-pass type I I membrane protein which belongs to the peptidase M28 family and M28B subfamily. FOLH1 is highly expressed in prostate epithelium. It is detected in urinary bladder, kidney, testis, ovary, fallopian tube, breast, adrenal gland, liver, esophagus, stomach, small intestine, colon, brain (at protein level), and the capillary endothelium of a variety of tumors. FOLH1 has both folate

## For Research Use Only

A Reliable Research Partner in Life Science and Medicine

Toll-free: 1-888-852-8623

Web: [www.elabscience.com](http://www.elabscience.com)

Tel: 1-832-243-6086

Email: [techsupport@elabscience.com](mailto:techsupport@elabscience.com)

Fax: 1-832-243-6017

# Recombinant Mouse PSMA / FOLH1 protein (His tag)



Catalog Number: PDEM100095

hydrolase and N-acetylated alpha linked acidic dipeptidase (NAALADase) activity. It has a preference for tri-alpha-glutamate peptides. Genetic variation in FOLH1 may be associated with low folate levels and consequent hyperhomocysteinemia. This condition can result in increased risk of cardiovascular disease, neural tube defects, and cognitive deficits. FOLH1 also shows a promising role in directed imaging and therapy of recurrent or metastatic disease.

---

## For Research Use Only

A Reliable Research Partner in Life Science and Medicine

Toll-free: 1-888-852-8623

Tel: 1-832-243-6086

Fax: 1-832-243-6017

Web: [www.elabscience.com](http://www.elabscience.com)

Email: [techsupport@elabscience.com](mailto:techsupport@elabscience.com)