



# SZABO SCANDIC

Part of Europa Biosite

## Produktinformation



Forschungsprodukte & Biochemikalien



Zellkultur & Verbrauchsmaterial



Diagnostik & molekulare Diagnostik



Laborgeräte & Service

Weitere Information auf den folgenden Seiten!  
See the following pages for more information!



### Lieferung & Zahlungsart

siehe unsere [Liefer- und Versandbedingungen](#)

### Zuschläge

- Mindermengenzuschlag
- Trockeneiszuschlag
- Gefahrgutzuschlag
- Expressversand

### SZABO-SCANDIC HandelsgmbH

Quellenstraße 110, A-1100 Wien

T. +43(0)1 489 3961-0

F. +43(0)1 489 3961-7

[mail@szabo-scandic.com](mailto:mail@szabo-scandic.com)

[www.szabo-scandic.com](http://www.szabo-scandic.com)

[linkedin.com/company/szaboscandic](https://www.linkedin.com/company/szaboscandic) 

# Recombinant Mouse CD62L/L-Selectin protein (His tag)



Catalog Number:PDEM100101

**Note:** Centrifuge before opening to ensure complete recovery of vial contents.

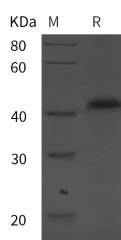
## Description

<b>Synonyms</b>	L-selectin;Sell;CD62 antigen-like family member L;Leukocyte adhesion molecule 1;LECAM1;Lymph node homing receptor;Lymphocyte antigen 22;CD62L;LECAM-1;Lnhp;Ly-22;Ly-m22;Lyam-1;Lyam1
<b>Species</b>	Mouse
<b>Expression Host</b>	E.coli
<b>Sequence</b>	Trp 39-Asn 332
<b>Accession</b>	P18337
<b>Calculated Molecular Weight</b>	32.2 kDa
<b>Observed molecular weight</b>	41 kDa
<b>Tag</b>	N-His

## Properties

<b>Purity</b>	> 95 % as determined by reducing SDS-PAGE.
<b>Endotoxin</b>	Please contact us for more information.
<b>Storage</b>	Generally, lyophilized proteins are stable for up to 12 months when stored at -20 to -80°C. Reconstituted protein solution can be stored at 4-8°C for 2-7 days. Aliquots of reconstituted samples are stable at < -20°C for 3 months.
<b>Shipping</b>	This product is provided as lyophilized powder which is shipped with ice packs.
<b>Formulation</b>	Lyophilized from sterile PBS, pH 7.4. Normally 5 % - 8 % trehalose, mannitol and 0.01 % Tween80 are added as protectants before lyophilization. Please refer to the specific buffer information in the printed manual.
<b>Reconstitution</b>	Please refer to the printed manual for detailed information.

## Data



> 95 % as determined by reducing SDS-PAGE.

## Background

L-selectin (SELL), also known as CD62L, is a key adhesion molecule that regulates both the migration of leukocytes at sites of inflammation and the recirculation of lymphocytes between blood and lymphoid tissues. It belongs to the selectin family of proteins, and consisting of a large, highly glycosylated, extracellular domain, a single spanning transmembrane domain and a small cytoplasmic tail. L-selectin is the only selectin expressed on leukocytes and mediates a number of leukocyte-endothelial interactions. L-selectin acts as a "homing receptor" for leukocytes to enter secondary lymphoid tissues via high endothelial venules. Ligands present on endothelial cells will bind to leukocyte expressing L-selectin,

## For Research Use Only

A Reliable Research Partner in Life Science and Medicine

Toll-free: 1-888-852-8623

Web: [www.elabscience.com](http://www.elabscience.com)

Tel: 1-832-243-6086

Email: [techsupport@elabscience.com](mailto:techsupport@elabscience.com)

Fax: 1-832-243-6017

# Recombinant Mouse CD62L/L-Selectin protein (His tag)



Catalog Number:PDEM100101

---

slowing leukocyte trafficking through the blood, and facilitating entry into a secondary lymphoid organ at that point. L-selectin-mediated lymphocyte recirculation is required for maintaining the appropriate tissue distribution of lymphocyte subpopulations including naïve and effector subsets such as regulatory T cells. In addition, L-selectin-mediated entry into peripheral lymph nodes is required for optimal induction of lymphocyte homeostatic proliferation during lymphopenia. Importantly, L-selectin has been shown to have both adhesive and signaling functions during leukocyte migration. L-selectin has also been shown to mediate leukocyte recruitment during chronic inflammatory and autoimmune diseases and thus is a potential therapeutic target for drug development.

---

## For Research Use Only

A Reliable Research Partner in Life Science and Medicine

Toll-free: 1-888-852-8623

Tel: 1-832-243-6086

Fax: 1-832-243-6017

Web: [www.elabscience.com](http://www.elabscience.com)

Email: [techsupport@elabscience.com](mailto:techsupport@elabscience.com)