



SZABO SCANDIC

Part of Europa Biosite

Produktinformation



Forschungsprodukte & Biochemikalien



Zellkultur & Verbrauchsmaterial



Diagnostik & molekulare Diagnostik



Laborgeräte & Service

Weitere Information auf den folgenden Seiten!
See the following pages for more information!



Lieferung & Zahlungsart

siehe unsere [Liefer- und Versandbedingungen](#)

Zuschläge

- Mindermengenzuschlag
- Trockeneiszuschlag
- Gefahrgutzuschlag
- Expressversand

SZABO-SCANDIC HandelsgmbH

Quellenstraße 110, A-1100 Wien

T. +43(0)1 489 3961-0

F. +43(0)1 489 3961-7

mail@szabo-scandic.com

www.szabo-scandic.com

[linkedin.com/company/szaboscandic](https://www.linkedin.com/company/szaboscandic) 

Recombinant Rat SDF-1/CXCL12 protein (GST tag)

Catalog Number: PDER100045



Note: Centrifuge before opening to ensure complete recovery of vial contents.

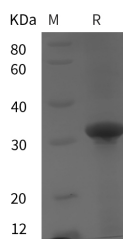
Description

Synonyms	Cxcl12;Stromal cell-derived factor 1;SDF-1;TPAR1;C-X-C motif chemokine 12;Pre-B cell growth-stimulating factor;TLSF;Sdf1
Species	Rat
Expression Host	E.coli
Sequence	Gly 21-Lys 89
Accession	Q9QZD1
Calculated Molecular Weight	32.5 kDa
Observed molecular weight	35 kDa
Tag	N-GST

Properties

Purity	> 95 % as determined by reducing SDS-PAGE.
Endotoxin	Please contact us for more information.
Storage	Generally, lyophilized proteins are stable for up to 12 months when stored at -20 to -80°C. Reconstituted protein solution can be stored at 4-8°C for 2-7 days. Aliquots of reconstituted samples are stable at < -20°C for 3 months.
Shipping	This product is provided as lyophilized powder which is shipped with ice packs.
Formulation	Lyophilized from sterile PBS, pH 7.4. Normally 5 % - 8 % trehalose, mannitol and 0.01 % Tween80 are added as protectants before lyophilization. Please refer to the specific buffer information in the printed manual.
Reconstitution	Please refer to the printed manual for detailed information.

Data



> 95 % as determined by reducing SDS-PAGE.

Background

CXCL12, also known as SDF-1, is a CXC chemokine that interacts with CXCR4. SDF-1 alpha and SDF-1 beta are alternatively spliced isoforms of CXCL12. SDF-1 beta has an additional 4 amino acids at the carboxy-terminus.

For Research Use Only

A Reliable Research Partner in Life Science and Medicine

Toll-free: 1-888-852-8623

Web: www.elabscience.com

Tel: 1-832-243-6086

Email: techsupport@elabscience.com

Fax: 1-832-243-6017