



SZABO SCANDIC

Part of Europa Biosite

Produktinformation



Forschungsprodukte & Biochemikalien



Zellkultur & Verbrauchsmaterial



Diagnostik & molekulare Diagnostik



Laborgeräte & Service

Weitere Information auf den folgenden Seiten!
See the following pages for more information!



Lieferung & Zahlungsart

siehe unsere [Liefer- und Versandbedingungen](#)

Zuschläge

- Mindermengenzuschlag
- Trockeneiszuschlag
- Gefahrgutzuschlag
- Expressversand

SZABO-SCANDIC HandelsgmbH

Quellenstraße 110, A-1100 Wien

T. +43(0)1 489 3961-0

F. +43(0)1 489 3961-7

mail@szabo-scandic.com

www.szabo-scandic.com

[linkedin.com/company/szaboscandic](https://www.linkedin.com/company/szaboscandic) 

Recombinant Rat GPRC6A protein (His tag)

Catalog Number: PDER100062



Note: Centrifuge before opening to ensure complete recovery of vial contents.

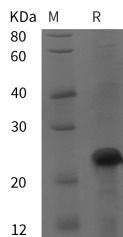
Description

Synonyms	bA86F4.3;G protein coupled receptor 33;G-protein coupled receptor family C group 6 member A;GPC6A;GPCR33;Predicted with SOSUI analysis;seven transmembrane helix receptor
Species	Rat
Expression Host	E.coli
Sequence	Thr 456-Asp 590
Accession	Q70VB1
Calculated Molecular Weight	14.7 kDa
Observed molecular weight	25 kDa
Tag	N-His

Properties

Purity	> 95 % as determined by reducing SDS-PAGE.
Endotoxin	Please contact us for more information.
Storage	Generally, lyophilized proteins are stable for up to 12 months when stored at -20 to -80°C. Reconstituted protein solution can be stored at 4-8°C for 2-7 days. Aliquots of reconstituted samples are stable at < -20°C for 3 months.
Shipping	This product is provided as lyophilized powder which is shipped with ice packs.
Formulation	Lyophilized from sterile PBS, pH 7.4. Normally 5 % - 8 % trehalose, mannitol and 0.01 % Tween80 are added as protectants before lyophilization. Please refer to the specific buffer information in the printed manual.
Reconstitution	Please refer to the printed manual for detailed information.

Data



> 95 % as determined by reducing SDS-PAGE.

Background

Receptor activated by amino acids with a preference for basic amino acids such as L-Lys, L-Arg and L-ornithine but also by small and polar amino acids. The L-alpha amino acids response is augmented by divalent cations Ca(2+) and Mg(2+). Activated by extracellular calcium and osteocalcin. Seems to act through a G(q)/G(11) and G(i)-coupled pathway. Mediates the non-genomic effects of androgens in multiple tissue. May coordinate nutritional and hormonal anabolic signals through the sensing of extracellular amino acids, osteocalcin, divalent ions and its responsiveness to anabolic steroids.

For Research Use Only

A Reliable Research Partner in Life Science and Medicine

Toll-free: 1-888-852-8623

Web: www.elabscience.com

Tel: 1-832-243-6086

Email: techsupport@elabscience.com

Fax: 1-832-243-6017