



# SZABO SCANDIC

Part of Europa Biosite

## Produktinformation



Forschungsprodukte & Biochemikalien



Zellkultur & Verbrauchsmaterial



Diagnostik & molekulare Diagnostik



Laborgeräte & Service

Weitere Information auf den folgenden Seiten!  
See the following pages for more information!



### Lieferung & Zahlungsart

siehe unsere [Liefer- und Versandbedingungen](#)

### Zuschläge

- Mindermengenzuschlag
- Trockeneiszuschlag
- Gefahrgutzuschlag
- Expressversand

### SZABO-SCANDIC HandelsgmbH

Quellenstraße 110, A-1100 Wien

T. +43(0)1 489 3961-0

F. +43(0)1 489 3961-7

[mail@szabo-scandic.com](mailto:mail@szabo-scandic.com)

[www.szabo-scandic.com](http://www.szabo-scandic.com)

[linkedin.com/company/szaboscandic](https://www.linkedin.com/company/szaboscandic) 

# Recombinant Rat Clusterin/ApoJ protein (His tag)

Catalog Number: PDER100064



**Note:** Centrifuge before opening to ensure complete recovery of vial contents.

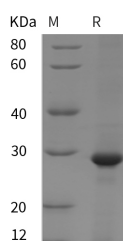
## Description

<b>Synonyms</b>	Clusterin;Aging-Associated Gene 4 Protein;Apolipoprotein J;Apo-J;Complement Cytolysis Inhibitor;CLI;Complement-Associated Protein SP-40;Ku70-Binding Protein 1;NA1/NA2;Testosterone-Repressed Prostate Message 2;TRPM-2;CLU;APOJ;CLI;KUB1;AAG4;AP
<b>Species</b>	Rat
<b>Expression Host</b>	E.coli
<b>Sequence</b>	Glu 22-Arg 226
<b>Accession</b>	P05371
<b>Calculated Molecular Weight</b>	22.4 kDa
<b>Observed molecular weight</b>	28 kDa
<b>Tag</b>	N-His

## Properties

<b>Purity</b>	> 95 % as determined by reducing SDS-PAGE.
<b>Endotoxin</b>	Please contact us for more information.
<b>Storage</b>	Generally, lyophilized proteins are stable for up to 12 months when stored at -20 to -80°C. Reconstituted protein solution can be stored at 4-8°C for 2-7 days. Aliquots of reconstituted samples are stable at < -20°C for 3 months.
<b>Shipping</b>	This product is provided as lyophilized powder which is shipped with ice packs.
<b>Formulation</b>	Lyophilized from sterile PBS, pH 7.4. Normally 5 % - 8 % trehalose, mannitol and 0.01 % Tween80 are added as protectants before lyophilization. Please refer to the specific buffer information in the printed manual.
<b>Reconstitution</b>	Please refer to the printed manual for detailed information.

## Data



> 95 % as determined by reducing SDS-PAGE.

## Background

Clusterin is a secreted protein which belongs to the Clusterin family. Clusterin is expressed in adult testis; heart; ovary; adrenal gland; brain and liver. Clusterin has been suggested to be involved in several basic biological events such as cell death; tumor progression; and neurodegenerative disorders. In addition;Clusterin is up/ down regulated on the mRNA or protein level in many pathological and clinically relevant situations including cancer; organ regeneration; infection; Alzheimer disease; retinitis pigmentosa; myocardial infarction; renal tubular damage; autoimmunity and others.

## For Research Use Only

A Reliable Research Partner in Life Science and Medicine

Toll-free: 1-888-852-8623

Web: [www.elabscience.com](http://www.elabscience.com)

Tel: 1-832-243-6086

Email: [techsupport@elabscience.com](mailto:techsupport@elabscience.com)

Fax: 1-832-243-6017