



SZABO SCANDIC

Part of Europa Biosite

Produktinformation



Forschungsprodukte & Biochemikalien



Zellkultur & Verbrauchsmaterial



Diagnostik & molekulare Diagnostik



Laborgeräte & Service

Weitere Information auf den folgenden Seiten!
See the following pages for more information!



Lieferung & Zahlungsart

siehe unsere [Liefer- und Versandbedingungen](#)

Zuschläge

- Mindermengenzuschlag
- Trockeneiszuschlag
- Gefahrgutzuschlag
- Expressversand

SZABO-SCANDIC HandelsgmbH

Quellenstraße 110, A-1100 Wien

T. +43(0)1 489 3961-0

F. +43(0)1 489 3961-7

mail@szabo-scandic.com

www.szabo-scandic.com

[linkedin.com/company/szaboscandic](https://www.linkedin.com/company/szaboscandic)

Recombinant Rat CD38/ADPRC1 protein (His tag)

Catalog Number: PDER100072



Note: Centrifuge before opening to ensure complete recovery of vial contents.

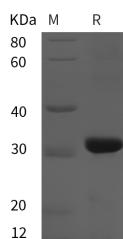
Description

Synonyms	17-1A;323/A3;ACSTD1;CD326;EGP-2;EGP314;EGP40;EpCAM;MOC31;TACST-1;TACSTD1;TROP1;
Species	Rat
Expression Host	E.coli
Sequence	Trp 45-Val 303
Accession	Q64244
Calculated Molecular Weight	28.4 kDa
Observed molecular weight	32 kDa
Tag	N-His

Properties

Purity	> 95 % as determined by reducing SDS-PAGE.
Endotoxin	Please contact us for more information.
Storage	Generally, lyophilized proteins are stable for up to 12 months when stored at -20 to -80°C. Reconstituted protein solution can be stored at 4-8°C for 2-7 days. Aliquots of reconstituted samples are stable at < -20°C for 3 months.
Shipping	This product is provided as lyophilized powder which is shipped with ice packs.
Formulation	Lyophilized from sterile PBS, pH 7.4. Normally 5 % - 8 % trehalose, mannitol and 0.01 % Tween80 are added as protectants before lyophilization. Please refer to the specific buffer information in the printed manual.
Reconstitution	Please refer to the printed manual for detailed information.

Data



> 95 % as determined by reducing SDS-PAGE.

Background

Epithelial Cellular Adhesion Molecule (Ep-CAM), also known as EGP314, mEGP314, Protein 289A, Tumor-associated calcium signal transducer 1, CD326, belongs to the EPCAM family. Its' monomer subunit structure interacts with phosphorylated CLDN7. Ep-CAM may act as a physical homophilic interaction molecule between intestinal epithelial cells (IECs) and intraepithelial lymphocytes (IELs) at the mucosal epithelium for providing immunological barrier as a first line of defense against mucosal infection. It plays a role in embryonic stem cells proliferation and differentiation. It also up-regulates the expression of FABP5, MYC and cyclins A and E. The post-translational modification glycosylation at Asn-198 is crucial for protein stability.

For Research Use Only

A Reliable Research Partner in Life Science and Medicine

Toll-free: 1-888-852-8623

Web: www.elabscience.com

Tel: 1-832-243-6086

Email: techsupport@elabscience.com

Fax: 1-832-243-6017