



SZABO SCANDIC

Part of Europa Biosite

Produktinformation



Forschungsprodukte & Biochemikalien



Zellkultur & Verbrauchsmaterial



Diagnostik & molekulare Diagnostik



Laborgeräte & Service

Weitere Information auf den folgenden Seiten!
See the following pages for more information!



Lieferung & Zahlungsart

siehe unsere [Liefer- und Versandbedingungen](#)

Zuschläge

- Mindermengenzuschlag
- Trockeneiszuschlag
- Gefahrgutzuschlag
- Expressversand

SZABO-SCANDIC HandelsgmbH

Quellenstraße 110, A-1100 Wien

T. +43(0)1 489 3961-0

F. +43(0)1 489 3961-7

mail@szabo-scandic.com

www.szabo-scandic.com

[linkedin.com/company/szaboscandic](https://www.linkedin.com/company/szaboscandic) 

Recombinant Human LILRB1 Protein (His Tag)

Catalog Number:PDMH100016



Note: Centrifuge before opening to ensure complete recovery of vial contents.

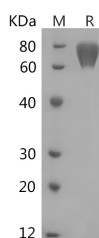
Description

Synonyms	Leukocyte Immunoglobulin-Like Receptor Subfamily B Member 1;LIR-1;Leukocyte Immunoglobulin-Like Receptor 1;CD85 Antigen-Like Family Member J;Immunoglobulin-Like Transcript 2;ILT-2;Monocyte/Macrophage Immunoglobulin-Like Receptor 7;MIR-7;CD85j;LILRB1;ILT2;LIR1;MIR7
Species	Human
Expression Host	HEK293 Cells
Sequence	Gly24-His458
Accession	D9IDM8
Calculated Molecular Weight	48.2 kDa
Observed molecular weight	79 kDa
Tag	C-His

Properties

Purity	> 95 % as determined by reducing SDS-PAGE.
Endotoxin	< 1.0 EU per µg of the protein as determined by the LAL method.
Storage	Generally, lyophilized proteins are stable for up to 12 months when stored at -20 to -80°C. Reconstituted protein solution can be stored at 4-8°C for 2-7 days. Aliquots of reconstituted samples are stable at < -20°C for 3 months.
Shipping	This product is provided as lyophilized powder which is shipped with ice packs.
Formulation	Lyophilized from a 0.2 µm filtered solution of 20mM PB, 150mM NaCl, pH 7.4. Normally 5 % - 8 % trehalose, mannitol and 0.01% Tween80 are added as protectants before lyophilization. Please refer to the specific buffer information in the printed man
Reconstitution	Please refer to the printed manual for detailed information.

Data



> 95 % as determined by reducing SDS-PAGE.

Background

The immunoglobulin-like transcript (ILT) family (also named leukocyte Ig-like receptors (LIR) and monocyte/macrophage Ig-like receptors (MIR)) can be activating and inhibitory immunoreceptors. ILTs are expressed on many leukocyte subsets and regulators of immune responses . ILTs share significant homology with killer cell Ig-like receptors (KIR). Except ILT-6, all ILT family members are type I transmembrane proteins having two or four extracellular Ig-like domains . ILT2 is expressed on most monocytes,dendritic cells,and mature B cells. ILT2 is also

For Research Use Only

A Reliable Research Partner in Life Science and Medicine

Toll-free: 1-888-852-8623

Web: www.elabscience.com

Tel: 1-832-243-6086

Email: techsupport@elabscience.com

Fax: 1-832-243-6017

Recombinant Human LILRB1 Protein (His Tag)

Catalog Number:PDMH100016



expressed on small percentages of T-cells and NK cells. ILT2 can prevents cellular activation.

For Research Use Only

A Reliable Research Partner in Life Science and Medicine

Toll-free: 1-888-852-8623

Tel: 1-832-243-6086

Fax: 1-832-243-6017

Web: www.elabscience.com

Email: techsupport@elabscience.com