



SZABO SCANDIC

Part of Europa Biosite

Produktinformation



Forschungsprodukte & Biochemikalien



Zellkultur & Verbrauchsmaterial



Diagnostik & molekulare Diagnostik



Laborgeräte & Service

Weitere Information auf den folgenden Seiten!
See the following pages for more information!



Lieferung & Zahlungsart

siehe unsere [Liefer- und Versandbedingungen](#)

Zuschläge

- Mindermengenzuschlag
- Trockeneiszuschlag
- Gefahrgutzuschlag
- Expressversand

SZABO-SCANDIC HandelsgmbH

Quellenstraße 110, A-1100 Wien

T. +43(0)1 489 3961-0

F. +43(0)1 489 3961-7

mail@szabo-scandic.com

www.szabo-scandic.com

[linkedin.com/company/szaboscandic](https://www.linkedin.com/company/szaboscandic) 

Recombinant Human PD-L2/CD273 Protein (His Tag)



Catalog Number:PDMH100020

Note: Centrifuge before opening to ensure complete recovery of vial contents.

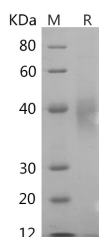
Description

Synonyms	Programmed Cell Death 1 Ligand 2;PD-1 Ligand 2;PD-L2;PDCD1 Ligand 2;Programmed Death Ligand 2;Butyrophilin B7-DC;B7-DC;CD273;PDCD1LG2;B7DC;CD273;PDCD1L2;PDL2
Species	Human
Expression Host	HEK293 Cells
Sequence	Leu20-Pro219
Accession	Q9BQ51
Calculated Molecular Weight	23.6 kDa
Observed molecular weight	34-50 kDa
Tag	C-His

Properties

Purity	> 95 % as determined by reducing SDS-PAGE.
Endotoxin	< 1.0 EU per µg of the protein as determined by the LAL method.
Storage	Generally, lyophilized proteins are stable for up to 12 months when stored at -20 to -80°C. Reconstituted protein solution can be stored at 4-8°C for 2-7 days. Aliquots of reconstituted samples are stable at < -20°C for 3 months.
Shipping	This product is provided as lyophilized powder which is shipped with ice packs.
Formulation	Lyophilized from a 0.2 µm filtered solution of 20mM PB, 150mM NaCl, pH 7.4. Normally 5 % - 8 % trehalose, mannitol and 0.01% Tween80 are added as protectants before lyophilization. Please refer to the specific buffer information in the printed man
Reconstitution	Please refer to the printed manual for detailed information.

Data



> 95 % as determined by reducing SDS-PAGE.

Background

Programmed Cell Death 1 Ligand 2 (PDCD1LG2) is a member of the BTN/MOG family. PDCD1LG2 contains one Ig-like C2-type domain and one Ig-like V-type domain. PDCD1LG2 is highly expressed in the heart; placenta; pancreas; lung and liver; it is weakly expressed in the spleen; lymph nodes; and thymus. PDCD1LG2 is involved in the costimulatory signal; essential for T-cell proliferation and IFNG production in a PDCD1-independent manner. PDCD1LG2 interaction with PDCD1 inhibits T-cell proliferation by blocking cell cycle progression and cytokine production.

For Research Use Only

A Reliable Research Partner in Life Science and Medicine

Toll-free: 1-888-852-8623

Web: www.elabscience.com

Tel: 1-832-243-6086

Email: techsupport@elabscience.com

Fax: 1-832-243-6017