



SZABO SCANDIC

Part of Europa Biosite

Produktinformation



Forschungsprodukte & Biochemikalien



Zellkultur & Verbrauchsmaterial



Diagnostik & molekulare Diagnostik



Laborgeräte & Service

Weitere Information auf den folgenden Seiten!
See the following pages for more information!



Lieferung & Zahlungsart

siehe unsere [Liefer- und Versandbedingungen](#)

Zuschläge

- Mindermengenzuschlag
- Trockeneiszuschlag
- Gefahrgutzuschlag
- Expressversand

SZABO-SCANDIC HandelsgmbH

Quellenstraße 110, A-1100 Wien

T. +43(0)1 489 3961-0

F. +43(0)1 489 3961-7

mail@szabo-scandic.com

www.szabo-scandic.com

[linkedin.com/company/szaboscandic](https://www.linkedin.com/company/szaboscandic) 

Recombinant Human MCAM/CD146 protein (His tag)



Catalog Number:PDMH100074

Note: Centrifuge before opening to ensure complete recovery of vial contents.

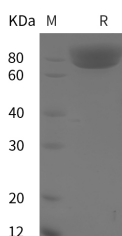
Description

Synonyms	CD146;MUC18
Species	Human
Expression Host	HEK293 Cells
Sequence	Met1-Gly559
Accession	P43121
Calculated Molecular Weight	61.4 kDa
Observed molecular weight	80 kDa
Tag	C-His

Properties

Purity	> 95 % as determined by reducing SDS-PAGE.
Endotoxin	Please contact us for more information.
Storage	Generally, lyophilized proteins are stable for up to 12 months when stored at -20 to -80°C. Reconstituted protein solution can be stored at 4-8°C for 2-7 days. Aliquots of reconstituted samples are stable at < -20°C for 3 months.
Shipping	This product is provided as lyophilized powder which is shipped with ice packs.
Formulation	Lyophilized from sterile PBS, pH 7.4. Normally 5 % - 8 % trehalose, mannitol and 0.01 % Tween80 are added as protectants before lyophilization. Please refer to the specific buffer information in the printed manual.
Reconstitution	Please refer to the printed manual for detailed information.

Data



> 95 % as determined by reducing SDS-PAGE.

Background

The CD146 antigen, also known as melanoma cell adhesion molecule (MCAM) and MUC18, is an integral membrane glycoprotein belonging to the immunoglobulin superfamily. CD146 contains the characteristic immunoglobulin-like domains (V-V-C2-C2-C2), a transmembrane region and a short cytoplasmic tail. The CD146 expression is detected in endothelial cells in vascular tissue throughout the body, and plays a role in cell adhesion, as well as in cohesion of the endothelial monolayer at intercellular junctions in vascular tissue. As a Ca²⁺-independent cell adhesion molecule involved in heterophilic cell to cell interactions and a surface receptor, CD146 triggers tyrosine phosphorylation of FYN and PTK2 and subsequently induced signal transduction, proteolysis, or immune recognition. This protein is also expressed predominantly on metastatic lesions and advanced primary tumours, and thus has been suggested to play an important role

For Research Use Only

A Reliable Research Partner in Life Science and Medicine

Toll-free: 1-888-852-8623

Web: www.elabscience.com

Tel: 1-832-243-6086

Email: techsupport@elabscience.com

Fax: 1-832-243-6017

Recombinant Human MCAM/CD146 protein (His tag)

Catalog Number:PDMH100074



in tumour progression and the development of metastasis in certain human carcinomas.

For Research Use Only

A Reliable Research Partner in Life Science and Medicine

Toll-free: 1-888-852-8623

Tel: 1-832-243-6086

Fax: 1-832-243-6017

Web: www.elabscience.com

Email: techsupport@elabscience.com