



# SZABO SCANDIC

Part of Europa Biosite

## Produktinformation



Forschungsprodukte & Biochemikalien



Zellkultur & Verbrauchsmaterial



Diagnostik & molekulare Diagnostik



Laborgeräte & Service

Weitere Information auf den folgenden Seiten!  
See the following pages for more information!



### Lieferung & Zahlungsart

siehe unsere [Liefer- und Versandbedingungen](#)

### Zuschläge

- Mindermengenzuschlag
- Trockeneiszuschlag
- Gefahrgutzuschlag
- Expressversand

### SZABO-SCANDIC HandelsgmbH

Quellenstraße 110, A-1100 Wien

T. +43(0)1 489 3961-0

F. +43(0)1 489 3961-7

[mail@szabo-scandic.com](mailto:mail@szabo-scandic.com)

[www.szabo-scandic.com](http://www.szabo-scandic.com)

[linkedin.com/company/szaboscandic](https://www.linkedin.com/company/szaboscandic) 

# Recombinant Human VEGFR-2/KDR protein (His tag)



Catalog Number:PDMH100082

**Note:** Centrifuge before opening to ensure complete recovery of vial contents.

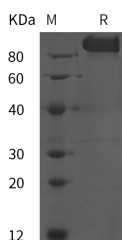
## Description

<b>Synonyms</b>	Vascular endothelial growth factor receptor 2;KDR;VEGFR-2;Fetal liver kinase 1;FLK-1;Kinase insert domain receptor;Protein-tyrosine kinase receptor flk-1;CD309;Flk-1;FLK1;VEGFR;VEGFR2
<b>Species</b>	Human
<b>Expression Host</b>	HEK293 Cells
<b>Sequence</b>	Met1-Glu764
<b>Accession</b>	P35968
<b>Calculated Molecular Weight</b>	83.9 kDa
<b>Observed molecular weight</b>	90 kDa
<b>Tag</b>	C-His

## Properties

<b>Purity</b>	> 95 % as determined by reducing SDS-PAGE.
<b>Endotoxin</b>	Please contact us for more information.
<b>Storage</b>	Generally, lyophilized proteins are stable for up to 12 months when stored at -20 to -80°C. Reconstituted protein solution can be stored at 4-8°C for 2-7 days. Aliquots of reconstituted samples are stable at < -20°C for 3 months.
<b>Shipping</b>	This product is provided as lyophilized powder which is shipped with ice packs.
<b>Formulation</b>	Lyophilized from sterile PBS, pH 7.4. Normally 5 % - 8 % trehalose, mannitol and 0.01 % Tween80 are added as protectants before lyophilization. Please refer to the specific buffer information in the printed manual.
<b>Reconstitution</b>	Please refer to the printed manual for detailed information.

## Data



> 95 % as determined by reducing SDS-PAGE.

## Background

VEGFR2, also called as KDR or Flk-1, is identified as the receptor for VEGF and VEGFC and an early marker for endothelial cell progenitors, whose expression is restricted to endothelial cells in vivo. VEGFR2 was shown to be the primary signal transducer for angiogenesis and the development of pathological conditions such as cancer and diabetic retinopathy. It has been shown that VEGFR2 is expressed mainly in the endothelial cells, and the expression is upregulated in the tumor vasculature. Thus the inhibition of VEGFR2 activity and its downstream signaling are important targets for the treatment of diseases involving angiogenesis. VEGFR2 transduces the major signals for angiogenesis via its

## For Research Use Only

A Reliable Research Partner in Life Science and Medicine

Toll-free: 1-888-852-8623

Web: [www.elabscience.com](http://www.elabscience.com)

Tel: 1-832-243-6086

Email: [techsupport@elabscience.com](mailto:techsupport@elabscience.com)

Fax: 1-832-243-6017

# Recombinant Human VEGFR-2/KDR protein (His tag)



Catalog Number:PDMH100082

strong tyrosine kinase activity. However, unlike other representative tyrosine kinase receptors, VEGFR2 does not use the Ras pathway as a major downstream signaling but rather uses the phospholipase C-protein kinase C pathway to signal mitogen-activated protein (MAP)-kinase activation and DNA synthesis. VEGFR2 is a direct and major signal transducer for pathological angiogenesis, including cancer and diabetic retinopathy, in cooperation with many other signaling partners; thus, VEGFR2 and its downstream signaling appear to be critical targets for the suppression of these diseases. VEGF and VEGFR2-mediated survival signaling is critical to endothelial cell survival, maintenance of the vasculature and alveolar structure and regeneration of lung tissue. Reduced VEGF and VEGFR2 expression in emphysematous lungs has been linked to increased endothelial cell death and vascular regression.

---

## For Research Use Only

A Reliable Research Partner in Life Science and Medicine

Toll-free: 1-888-852-8623

Tel: 1-832-243-6086

Fax: 1-832-243-6017

Web: [www.elabscience.com](http://www.elabscience.com)

Email: [techsupport@elabscience.com](mailto:techsupport@elabscience.com)