



SZABO SCANDIC

Part of Europa Biosite

Produktinformation



Forschungsprodukte & Biochemikalien



Zellkultur & Verbrauchsmaterial



Diagnostik & molekulare Diagnostik



Laborgeräte & Service

Weitere Information auf den folgenden Seiten!
See the following pages for more information!



Lieferung & Zahlungsart

siehe unsere [Liefer- und Versandbedingungen](#)

Zuschläge

- Mindermengenzuschlag
- Trockeneiszuschlag
- Gefahrgutzuschlag
- Expressversand

SZABO-SCANDIC HandelsgmbH

Quellenstraße 110, A-1100 Wien

T. +43(0)1 489 3961-0

F. +43(0)1 489 3961-7

mail@szabo-scandic.com

www.szabo-scandic.com

[linkedin.com/company/szaboscandic](https://www.linkedin.com/company/szaboscandic) 

Recombinant Human Alpha-Fetoprotein/AFP protein (His tag)



Catalog Number:PDMH100106

Note: Centrifuge before opening to ensure complete recovery of vial contents.

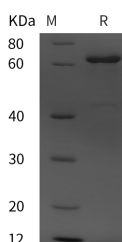
Description

Synonyms	Alpha-fetoprotein;Alpha-1-fetoprotein;Alpha-fetoglobulin;AFP;HPAFP;FETA
Species	Human
Expression Host	HEK293 Cells
Sequence	Met1-Val609
Accession	P02771
Calculated Molecular Weight	66.9 kDa
Observed molecular weight	68 kDa
Tag	C-His

Properties

Purity	> 95 % as determined by reducing SDS-PAGE.
Endotoxin	Please contact us for more information.
Storage	Generally, lyophilized proteins are stable for up to 12 months when stored at -20 to -80°C. Reconstituted protein solution can be stored at 4-8°C for 2-7 days. Aliquots of reconstituted samples are stable at < -20°C for 3 months.
Shipping	This product is provided as lyophilized powder which is shipped with ice packs.
Formulation	Lyophilized from sterile PBS, pH 7.4. Normally 5 % - 8 % trehalose, mannitol and 0.01 % Tween80 are added as protectants before lyophilization. Please refer to the specific buffer information in the printed manual.
Reconstitution	Please refer to the printed manual for detailed information.

Data



> 95 % as determined by reducing SDS-PAGE.

Background

Alpha-fetoprotein (AFP) is classified as a member of the albuminoid gene superfamily consisting of albumin; AFP; vitaminD (Gc) protein; and alpha-albumin. AFP is a glycoprotein of 591 amino acids and a carbohydrate moiety. AFP is a major plasma protein produced by the yolk sac and the liver during fetal development. It is thought to be the fetal form of serum albumin. AFP binds to copper; nickel; fatty acids and bilirubin and is found in monomeric; dimeric and trimeric forms. AFP is one of the several embryo-specific proteins and is a dominant serum protein as early in human embryonic life as one month; when albumin and transferrin are present in relatively small amounts. It is first synthesized in the human by the yolk sac and liver (1-2 months) and subsequently predominantly in the liver. A small amount of AFP is produced by the GI tract of the human conceptus. It has been proved that AFP may reappear in the serum in elevated

For Research Use Only

A Reliable Research Partner in Life Science and Medicine

Toll-free: 1-888-852-8623

Web: www.elabscience.com

Tel: 1-832-243-6086

Email: techsupport@elabscience.com

Fax: 1-832-243-6017

Recombinant Human Alpha-Fetoprotein/AFP protein (His tag)



Catalog Number:PDMH100106

amounts in adult life in association with normal restorative processes and with malignant growth. Alpha-fetoprotein (AFP) is a specific marker for hepatocellular carcinoma (HCC); teratoblastomas; and neural tube defect (NTD).

For Research Use Only

A Reliable Research Partner in Life Science and Medicine

Toll-free: 1-888-852-8623

Tel: 1-832-243-6086

Fax: 1-832-243-6017

Web: www.elabscience.com

Email: techsupport@elabscience.com