



# SZABO SCANDIC

Part of Europa Biosite

## Produktinformation



Forschungsprodukte & Biochemikalien



Zellkultur & Verbrauchsmaterial



Diagnostik & molekulare Diagnostik



Laborgeräte & Service

Weitere Information auf den folgenden Seiten!  
See the following pages for more information!



### Lieferung & Zahlungsart

siehe unsere [Liefer- und Versandbedingungen](#)

### Zuschläge

- Mindermengenzuschlag
- Trockeneiszuschlag
- Gefahrgutzuschlag
- Expressversand

### SZABO-SCANDIC HandelsgmbH

Quellenstraße 110, A-1100 Wien

T. +43(0)1 489 3961-0

F. +43(0)1 489 3961-7

[mail@szabo-scandic.com](mailto:mail@szabo-scandic.com)

[www.szabo-scandic.com](http://www.szabo-scandic.com)

[linkedin.com/company/szaboscandic](https://www.linkedin.com/company/szaboscandic) 

# Recombinant Human ApoH protein (His tag)

Catalog Number:PDMH100125



**Note:** Centrifuge before opening to ensure complete recovery of vial contents.

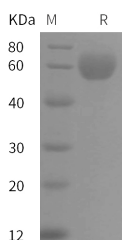
## Description

<b>Synonyms</b>	Beta-2-Glycoprotein 1;APC inhibitor;Activated Protein C-Binding Protein;Anticardiolipin Cofactor;Apolipoprotein H;Apo-H;Beta-2-Glycoprotein I;B2GPIBeta(2)GPI;APOH;B2G1;B2GP1;BG
<b>Species</b>	Human
<b>Expression Host</b>	HEK293 Cells
<b>Sequence</b>	Met 1-Cys 345
<b>Accession</b>	P02749
<b>Calculated Molecular Weight</b>	37.8 kDa
<b>Observed molecular weight</b>	60 kDa
<b>Tag</b>	C-His

## Properties

<b>Purity</b>	> 95 % as determined by reducing SDS-PAGE.
<b>Endotoxin</b>	Please contact us for more information.
<b>Storage</b>	Generally, lyophilized proteins are stable for up to 12 months when stored at -20 to -80°C. Reconstituted protein solution can be stored at 4-8°C for 2-7 days. Aliquots of reconstituted samples are stable at < -20°C for 3 months.
<b>Shipping</b>	This product is provided as lyophilized powder which is shipped with ice packs.
<b>Formulation</b>	Lyophilized from sterile PBS, pH 7.4. Normally 5 % - 8 % trehalose, mannitol and 0.01 % Tween80 are added as protectants before lyophilization. Please refer to the specific buffer information in the printed manual.
<b>Reconstitution</b>	Please refer to the printed manual for detailed information.

## Data



> 95 % as determined by reducing SDS-PAGE.

## Background

Apolipoprotein H (APOH), also known as Beta-2-glycoprotein 1, Activated protein C-binding protein, B2GPI, and B2G1, is a glycoprotein synthesized by liver cells and it is present in the blood associated with plasma lipoproteins. It is an essential cofactor for the binding of certain antiphospholipid antibodies (APA) to anionic phospholipid. APOH binds to various kinds of negatively charged substances such as heparin, phospholipids, and dextran sulfate. APOH may prevent activation of the intrinsic blood coagulation cascade by binding to phospholipids on the surface of damaged cells. The activity of APOH appears to involve the binding of agglutinating, negatively charged compounds, and inhibits

## For Research Use Only

A Reliable Research Partner in Life Science and Medicine

Toll-free: 1-888-852-8623

Web: [www.elabscience.com](http://www.elabscience.com)

Tel: 1-832-243-6086

Email: [techsupport@elabscience.com](mailto:techsupport@elabscience.com)

Fax: 1-832-243-6017

# Recombinant Human ApoH protein (His tag)

Catalog Number:PDMH100125



agglutination by the contact activation of the intrinsic blood coagulation pathway. APOH causes a reduction of the prothrombinase binding sites on platelets and reduces the activation caused by collagen when thrombin is present at physiological serum concentrations of APOH suggesting a regulatory role of APOH in coagulation. APOH plasma concentrations are strongly associated to metabolic syndrome alterations and vascular disease in type 2 diabetic and could be considered as a clinical marker of cardiovascular risk. APOH is found on several classes of lipoproteins, and is involved in the activation of lipoprotein lipase in lipid metabolism. This single-chain glycoprotein also has been implicated in several physiologic pathways including coagulation and the production of hypertension, which are related to the pathogenesis of primary cerebral hemorrhage (PICH).

---

## For Research Use Only

A Reliable Research Partner in Life Science and Medicine

Toll-free: 1-888-852-8623

Tel: 1-832-243-6086

Fax: 1-832-243-6017

Web: [www.elabscience.com](http://www.elabscience.com)

Email: [techsupport@elabscience.com](mailto:techsupport@elabscience.com)