



# SZABO SCANDIC

Part of Europa Biosite

## Produktinformation



Forschungsprodukte & Biochemikalien



Zellkultur & Verbrauchsmaterial



Diagnostik & molekulare Diagnostik



Laborgeräte & Service

Weitere Information auf den folgenden Seiten!  
See the following pages for more information!



### Lieferung & Zahlungsart

siehe unsere [Liefer- und Versandbedingungen](#)

### Zuschläge

- Mindermengenzuschlag
- Trockeneiszuschlag
- Gefahrgutzuschlag
- Expressversand

### SZABO-SCANDIC HandelsgmbH

Quellenstraße 110, A-1100 Wien

T. +43(0)1 489 3961-0

F. +43(0)1 489 3961-7

[mail@szabo-scandic.com](mailto:mail@szabo-scandic.com)

[www.szabo-scandic.com](http://www.szabo-scandic.com)

[linkedin.com/company/szaboscandic](https://www.linkedin.com/company/szaboscandic) 

# Recombinant Mouse LDLR protein (His tag)

Catalog Number:PDMM100016



**Note:** Centrifuge before opening to ensure complete recovery of vial contents.

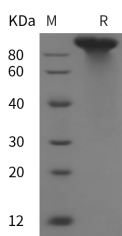
## Description

|                                    |  |
|------------------------------------|--|
| <b>Synonyms</b>                    | Low-density lipoprotein receptor;LDL receptor;Ldlr |
| <b>Species</b>                     | Mouse  |
| <b>Expression Host</b>             | HEK293 Cells                                       |
| <b>Sequence</b>                    | Met 1-Arg 790                                      |
| <b>Accession</b>                   | P35951   |
| <b>Calculated Molecular Weight</b> | 86.8 kDa   |
| <b>Observed molecular weight</b>   | 90 kDa   |
| <b>Tag</b>                         | C-His  |

## Properties

|                       |   |
|-----------------------|---|
| <b>Purity</b>         | > 95 % as determined by reducing SDS-PAGE.  |
| <b>Endotoxin</b>      | Please contact us for more information.   |
| <b>Storage</b>        | Generally, lyophilized proteins are stable for up to 12 months when stored at -20 to -80°C. Reconstituted protein solution can be stored at 4-8°C for 2-7 days. Aliquots of reconstituted samples are stable at < -20°C for 3 months. |
| <b>Shipping</b>       | This product is provided as lyophilized powder which is shipped with ice packs.   |
| <b>Formulation</b>    | Lyophilized from sterile PBS, pH 7.4.<br>Normally 5 % - 8 % trehalose, mannitol and 0.01 % Tween80 are added as protectants before lyophilization.<br>Please refer to the specific buffer information in the printed manual.          |
| <b>Reconstitution</b> | Please refer to the printed manual for detailed information.  |

## Data



> 95 % as determined by reducing SDS-PAGE.

## Background

LDL Receptor, also known as LDLR, is a mosaic protein which belongs to the Low density lipoprotein receptor gene family. The low density lipoprotein receptor (LDLR) gene family consists of cell surface proteins involved in receptor-mediated endocytosis of specific ligands. LDL Receptor consists of 840 amino acids (after removal of signal peptide) and mediates the endocytosis of cholesterol-rich LDL. Low density lipoprotein (LDL) is normally bound at the cell membrane and taken into the cell ending up in lysosomes where the protein is degraded and the cholesterol is made available for repression of microsomal enzyme 3-hydroxy-3-methylglutaryl coenzyme A (HMG CoA) reductase, the rate-limiting step in cholesterol synthesis. At the same time, a reciprocal stimulation of cholesterol ester synthesis takes place. LDL Receptor is a cell-surface receptor that recognizes the apoprotein B100 which is embedded in the phospholipid outer layer

## For Research Use Only

A Reliable Research Partner in Life Science and Medicine

Toll-free: 1-888-852-8623

Web: [www.elabscience.com](http://www.elabscience.com)

Tel: 1-832-243-6086

Email: [techsupport@elabscience.com](mailto:techsupport@elabscience.com)

Fax: 1-832-243-6017

# Recombinant Mouse LDLR protein (His tag)

Catalog Number:PDMM100016



of LDL particles. The receptor also recognizes the apoE protein found in chylomicron remnants and VLDL remnants.

---

## For Research Use Only

A Reliable Research Partner in Life Science and Medicine

Toll-free: 1-888-852-8623

Tel: 1-832-243-6086

Fax: 1-832-243-6017

Web: [www.elabscience.com](http://www.elabscience.com)

Email: [techsupport@elabscience.com](mailto:techsupport@elabscience.com)