



SZABO SCANDIC

Part of Europa Biosite

Produktinformation



Forschungsprodukte & Biochemikalien



Zellkultur & Verbrauchsmaterial



Diagnostik & molekulare Diagnostik



Laborgeräte & Service

Weitere Information auf den folgenden Seiten!
See the following pages for more information!



Lieferung & Zahlungsart

siehe unsere [Liefer- und Versandbedingungen](#)

Zuschläge

- Mindermengenzuschlag
- Trockeneiszuschlag
- Gefahrgutzuschlag
- Expressversand

SZABO-SCANDIC HandelsgmbH

Quellenstraße 110, A-1100 Wien

T. +43(0)1 489 3961-0

F. +43(0)1 489 3961-7

mail@szabo-scandic.com

www.szabo-scandic.com

[linkedin.com/company/szaboscandic](https://www.linkedin.com/company/szaboscandic) 

Recombinant Mouse ALCAM/CD166 protein (His tag)



Catalog Number:PDMM100038

Note: Centrifuge before opening to ensure complete recovery of vial contents.

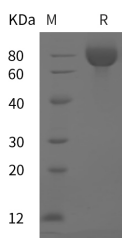
Description

Synonyms	AI853494;BEN;CD166;DM-GRASP;MuSC;SC1;CD166 antigen;cluster of differentiation 166;CD166;activated leucocyte cell adhesion molecule;CD6 ligand;Protein DM-GRASP;CD6L;MEMD
Species	Mouse
Expression Host	HEK293 Cells
Sequence	Met1-Lys527
Accession	Q61490
Calculated Molecular Weight	57.9 kDa
Observed molecular weight	75 kDa
Tag	C-His

Properties

Purity	> 95 % as determined by reducing SDS-PAGE.
Endotoxin	Please contact us for more information.
Storage	Generally, lyophilized proteins are stable for up to 12 months when stored at -20 to -80°C. Reconstituted protein solution can be stored at 4-8°C for 2-7 days. Aliquots of reconstituted samples are stable at < -20°C for 3 months.
Shipping	This product is provided as lyophilized powder which is shipped with ice packs.
Formulation	Lyophilized from sterile PBS, pH 7.4. Normally 5 % - 8 % trehalose, mannitol and 0.01% Tween80 are added as protectants before lyophilization. Please refer to the specific buffer information in the printed manual.
Reconstitution	Please refer to the printed manual for detailed information.

Data



> 95 % as determined by reducing SDS-PAGE.

Background

Activated leukocyte cell adhesion molecule (ALCAM), also named as CD166 and MEMD, is a type I transmembrane glycoprotein of immunoglobulin superfamily, which mediates homotypic and heterotypic interactions between cells. ALCAM interacts with high affinity with CD6 molecule but weaker homotypic (ALCAM-ALCAM) interactions have also been described. ALCAM-CD6 interactions play an important role in the maintenance of T cell activation, proliferation as well as in formation of immune synapse between antigen-presenting cell and lymphocytes. ALCAM is expressed on a wide variety of cells, particularly on activated lymphocytes, dendritic cells and monocytes, and on various

For Research Use Only

A Reliable Research Partner in Life Science and Medicine

Toll-free: 1-888-852-8623

Web: www.elabscience.com

Tel: 1-832-243-6086

Email: techsupport@elabscience.com

Fax: 1-832-243-6017

Recombinant Mouse ALCAM/CD166 protein (His tag)



Catalog Number:PDMM100038

epithelial cell types. It is also involved in multiple processes including embryogenesis, hematopoiesis, angiogenesis, and immune response. While expressed in a wide variety of tissues, ALCAM is usually restricted to subsets of cells in most adult tissues. Recently studies showed ALCAM has prognostic relevance in several human carcinomas, and it has been used as a biomarker for several tumor entities, including melanoma, gynecologic, urologic, and gastrointestinal cancers.

For Research Use Only

A Reliable Research Partner in Life Science and Medicine

Toll-free: 1-888-852-8623

Tel: 1-832-243-6086

Fax: 1-832-243-6017

Web: www.elabscience.com

Email: techsupport@elabscience.com