



SZABO SCANDIC

Part of Europa Biosite

Produktinformation



Forschungsprodukte & Biochemikalien



Zellkultur & Verbrauchsmaterial



Diagnostik & molekulare Diagnostik



Laborgeräte & Service

Weitere Information auf den folgenden Seiten!
See the following pages for more information!



Lieferung & Zahlungsart

siehe unsere [Liefer- und Versandbedingungen](#)

Zuschläge

- Mindermengenzuschlag
- Trockeneiszuschlag
- Gefahrgutzuschlag
- Expressversand

SZABO-SCANDIC HandelsgmbH

Quellenstraße 110, A-1100 Wien

T. +43(0)1 489 3961-0

F. +43(0)1 489 3961-7

mail@szabo-scandic.com

www.szabo-scandic.com

[linkedin.com/company/szaboscandic](https://www.linkedin.com/company/szaboscandic) 

Recombinant Rat E-selectin/Sele protein (His tag)

Catalog Number: PDMR100016



Note: Centrifuge before opening to ensure complete recovery of vial contents.

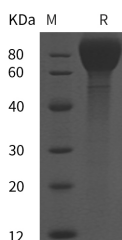
Description

Synonyms	E-selectin;CD62 antigen-like family member E;Endothelial leukocyte adhesion molecule 1;ELAM-1;Leukocyte-endothelial cell adhesion molecule 2;LECAM2;CD antigen CD62E;Sele;Elam-1
Species	Rat
Expression Host	HEK293 Cells
Sequence	Met1-Pro494
Accession	P98105
Calculated Molecular Weight	54.2 kDa
Observed molecular weight	85 kDa
Tag	C-His

Properties

Purity	> 95 % as determined by reducing SDS-PAGE.
Endotoxin	Please contact us for more information.
Storage	Generally, lyophilized proteins are stable for up to 12 months when stored at -20 to -80°C. Reconstituted protein solution can be stored at 4-8°C for 2-7 days. Aliquots of reconstituted samples are stable at < -20°C for 3 months.
Shipping	This product is provided as lyophilized powder which is shipped with ice packs.
Formulation	Lyophilized from sterile PBS, pH 7.4. Normally 5 % - 8 % trehalose, mannitol and 0.01 % Tween80 are added as protectants before lyophilization. Please refer to the specific buffer information in the printed manual.
Reconstitution	Please refer to the printed manual for detailed information.

Data



> 95 % as determined by reducing SDS-PAGE.

Background

E-selectin, also known as endothelial leukocyte adhesion molecule-1 (ELAM-1) and CD62E, is an inducible adhesion molecule that is expressed on the surfaces of stimulated vascular endothelial cells and is sometimes involved in cancer cell metastasis. As a member of the LEC-CAM or selectin family, E-selectin recognises and binds to sialylated carbohydrates including members of the Lewis X and Lewis A families found on monocytes, granulocytes, and T-lymphocytes. E-selectin supports rolling and stable arrest of leukocytes on activated vascular endothelium, and furthermore, it was indicated that it can also transduce an activating stimulus via the MAPK cascade into the endothelial cell during leukocyte

For Research Use Only

A Reliable Research Partner in Life Science and Medicine

Toll-free: 1-888-852-8623

Web: www.elabscience.com

Tel: 1-832-243-6086

Email: techsupport@elabscience.com

Fax: 1-832-243-6017

Recombinant Rat E-selectin/Sele protein (His tag)

Catalog Number:PDMR100016



adhesion. E-selectin regulates adhesive interactions between certain blood cells and endothelium. The soluble form of E selectin (sE-selectin) is a marker of endothelial activation, and has a potential role in the pathogenesis of cardiovascular disease as raised levels have been found in hypertension, diabetes and hyperlipidemia, although its association in established atherosclerosis disease and its value as a prognostic factor is more controversial. soluble E-selectin is inversely associated with the muscular component of the left ventricle, thereby suggesting that the lack of such a reparative factor may be associated with cardiac remodeling in end-stage renal disease (ESRD) patients. In addition, this adhesion molecule appears to be involved in the pathogenesis of atherosclerosis.

For Research Use Only

A Reliable Research Partner in Life Science and Medicine

Toll-free: 1-888-852-8623

Tel: 1-832-243-6086

Fax: 1-832-243-6017

Web: www.elabscience.com

Email: techsupport@elabscience.com