



SZABO SCANDIC

Part of Europa Biosite

Produktinformation



Forschungsprodukte & Biochemikalien



Zellkultur & Verbrauchsmaterial



Diagnostik & molekulare Diagnostik



Laborgeräte & Service

Weitere Information auf den folgenden Seiten!
See the following pages for more information!



Lieferung & Zahlungsart

siehe unsere [Liefer- und Versandbedingungen](#)

Zuschläge

- Mindermengenzuschlag
- Trockeneiszuschlag
- Gefahrgutzuschlag
- Expressversand

SZABO-SCANDIC HandelsgmbH

Quellenstraße 110, A-1100 Wien

T. +43(0)1 489 3961-0

F. +43(0)1 489 3961-7

mail@szabo-scandic.com

www.szabo-scandic.com

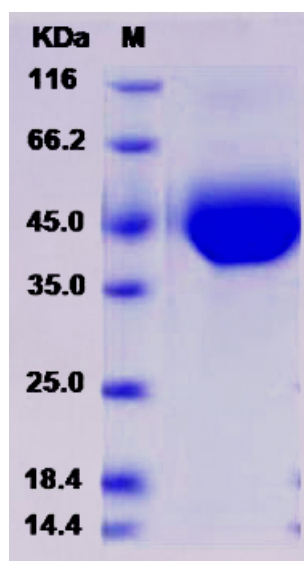
[linkedin.com/company/szaboscandic](https://www.linkedin.com/company/szaboscandic)

Recombinant Human CD33 / Siglec-3 Protein (His tag)

Protein Information

Alternative Name(s):	CD33, SIGLEC3
Catalog No :	PKSH030869
Species:	Human
Purity:	> 90 % as determined by SDS-PAGE
Expression Host :	Human Cells
Endotoxin Level	< 1.0 EU per ug of the protein as determined by the LAL method
Protein Description :	A DNA sequence encoding the human CD33 (AAH28152.1) (Met1-His259) was expressed with a C-terminal polyhistidine tag.
Predicted N terminal :	Asp 18
Molecular Mass:	The recombinant human CD33 comprises 253 amino acids and has a predicted molecular mass of 28.2 kDa. The apparent molecular mass of the protein is approximately 40-46 kDa in SDS-PAGE under reducing conditions.
Formulation:	Lyophilized from sterile PBS, pH 7.4, 10% glycerol
Dissolution:	Please refer to the printed manual for detailed information.
Stability :	Samples are stable for up to twelve months from date of receipt at -70°C
Shipping	In general, recombinant proteins are provided as lyophilized powder which are shipped at ambient temperature. Bulk packages of recombinant proteins are provided as frozen liquid. They are shipped out with blue ice unless customers require otherwise.

SDS-PAGE



Background

Myeloid cell surface antigen CD33 also known as Sialic acid binding Ig-like lectin 3, CD33 antigen or Siglec-3, is a member of the immunoglobulin superfamily and SIGLEC (sialic acid binding Ig-like lectin) family. This Single-pass type I membrane protein contains 1 Ig-like C2-type (immunoglobulin-like) domain and 1 Ig-like V-type (immunoglobulin-like) domain. CD33 /Siglec-3 is a putative adhesion molecule of myelomonocytic-derived cells that mediates sialic-acid dependent binding to cells. CD33 /Siglec-3 preferentially binds to alpha-2,6-linked sialic acid. The sialic acid recognition site may be masked by cis interactions with sialic acids on the same cell surface. In the immune response, may act as an inhibitory receptor upon ligand induced tyrosine phosphorylation by recruiting cytoplasmic phosphatase(s) via their SH2 domain(s) that block signal transduction through dephosphorylation of signaling molecules. CD33/Siglec-3 induces apoptosis in acute myeloid leukemia (in vitro). CD33/Siglec-3 can function as a sialic acid-dependent cell adhesion molecule and that binding can be modulated by endogenous sialoglycoconjugates when CD33 is expressed in a plasma membrane.