



# SZABO SCANDIC

Part of Europa Biosite

## Produktinformation



Forschungsprodukte & Biochemikalien



Zellkultur & Verbrauchsmaterial



Diagnostik & molekulare Diagnostik



Laborgeräte & Service

Weitere Information auf den folgenden Seiten!  
See the following pages for more information!



### Lieferung & Zahlungsart

siehe unsere [Liefer- und Versandbedingungen](#)

### Zuschläge

- Mindermengenzuschlag
- Trockeneiszuschlag
- Gefahrgutzuschlag
- Expressversand

### SZABO-SCANDIC HandelsgmbH

Quellenstraße 110, A-1100 Wien

T. +43(0)1 489 3961-0

F. +43(0)1 489 3961-7

[mail@szabo-scandic.com](mailto:mail@szabo-scandic.com)

[www.szabo-scandic.com](http://www.szabo-scandic.com)

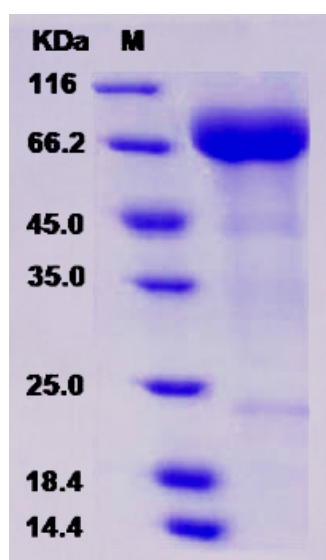
[linkedin.com/company/szaboscandic](https://www.linkedin.com/company/szaboscandic) 

## Recombinant Human SIGLEC5 Protein

### Protein Information

Alternative Name(s):	SIGLEC5, CD33L2, OBBP2
Catalog No :	PKSH030999
Species:	Human
Purity:	> 85 % as determined by SDS-PAGE
Expression Host :	Human Cells
Endotoxin Level	< 1.0 EU per ug of the protein as determined by the LAL method
Protein Description :	A DNA sequence encoding the human SIGLEC5 (O15389) (Met1-Thr 434) was expressed with six amino acids (LEVLFQ) at the C-terminus was expressed and purified.
Predicted N terminal :	Glu 17
Molecular Mass:	The recombinant human SIGLEC5 consists of 425 amino acids and predicts a molecular mass of 47.2 KDa. It migrates as an approximately 67 KDa band in SDS-PAGE under reducing conditions.
Formulation:	Lyophilized from sterile PBS, pH 7.4
Dissolution:	Please refer to the printed manual for detailed information.
Stability :	Samples are stable for up to twelve months from date of receipt at -70°C
Shipping	In general, recombinant proteins are provided as lyophilized powder which are shipped at ambient temperature. Bulk packages of recombinant proteins are provided as frozen liquid. They are shipped out with blue ice unless customers require otherwise.

### SDS-PAGE



## **Background**

SIGLEC5 contains 2 Ig-like C2-type (immunoglobulin-like) domains and 1 Ig-like V-type (immunoglobulin-like) domain. It belongs to the immunoglobulin superfamily and SIGLEC (sialic acid binding Ig-like lectin) family. SIGLEC5 is expressed by monocytic/myeloid lineage cells. It is found at high levels in peripheral blood leukocytes, spleen, bone marrow and at lower levels in lymph node, lung, appendix, placenta, pancreas and thymus. It is also expressed by monocytes and neutrophils but absent from leukemic cell lines representing early stages of myelomonocytic differentiation. SIGLEC5 is a putative adhesion molecule that mediates sialic-acid dependent binding to cells. It binds equally to alpha-2,3-linked and alpha-2,6-linked sialic acid. The sialic acid recognition site may be masked by cis interactions with sialic acids on the same cell surface.